

CENTRE FOR EVIDENCE-BASED HEALTH CARE (CEBHC)

Annual Report | 2023

The CEBHC is a coordinating and directive Centre for research and training in the field of evidence-based health care. We are located within the Department of Global Health at the Faculty of Medicine and Health Sciences, Stellenbosch University.

STELLENBOSCH
CENTRE
CONTENTS

A WORD FROM THE DIRECTOR OF THE CEBHC	2
A CENTRE OF EXCELLENCE	3
Vision, mission and guiding principles	4
Governing body	5
CEBHC team	6
Partnerships	8
OUR ADVANCES IN RESEARCH, TRAINING AND KNOWLEDGE TRANSLATION	9
How we performed in 2023	10
Belgian RedCross and CEBHC collaborate to scope and inform prehospital care priorities for injuries	11
CEBHA+ and Integrated Knowledge Translation	11
Development of 2023 WHO child wasting guideline supported by CEBHC guideline methodologists	12
READ-It evidence is informing guidelines and changing practice for people with TB worldwide	13
PhD graduates	14
Short courses/workshops	15
ADDENDA	17
Addendum A: Research outputs	18
Peer-reviewed publications	18
International conference presentations	19
National conference presentations	20
Postgraduate student supervision	21
Supporting graduates to publish their research projects	24
Addendum B: Intellectual input	26
FUNDING	29



PROF TARYN YOUNG
Director of the CEBHC

A WORD FROM THE DIRECTOR OF THE CEBHC

As the portfolio of work of the CEBHC continues to grow and impact health and development, we are realising our mission to be a Centre of Excellence in Africa in evidence synthesis and knowledge translation in health through innovation, collaboration and distinction in research.

In this annual report we highlight how the team served as WHO guideline methodologists, ensuring that guidelines are developed in accordance with standards and methods, and how the team conducted evidence synthesis informing national and WHO guidelines – clear examples of research for impact.

I was on sabbatical for most of 2023 – a time away from work, a time to write, a time to conduct research, a time to reflect.... Thinking about how the team juggles many commitments, works together to achieve our goals and lives our values every day – I recall some pearls of wisdom shared by Lehana Thabane. In December 2023 he received an honorary doctorate in recognition of his unconditional

support and significant contribution in advancing capacity to conduct robust research which informs healthcare decisions worldwide. He encouraged all to embrace the power of collaboration, sustain a positive perspective, embrace the transformative power of mentorship, to be kind and to refine your soft skills (such as the art of time management, and the mastery of stress resilience).

We are grateful for the support of our Advisory Committee, the Faculty of Medicine and Health Sciences, funders, collaborators and partners who enable us to move forward, working together, impacting health and development.

A special thanks to the incredible CEBHC team.

A Centre of Excellence

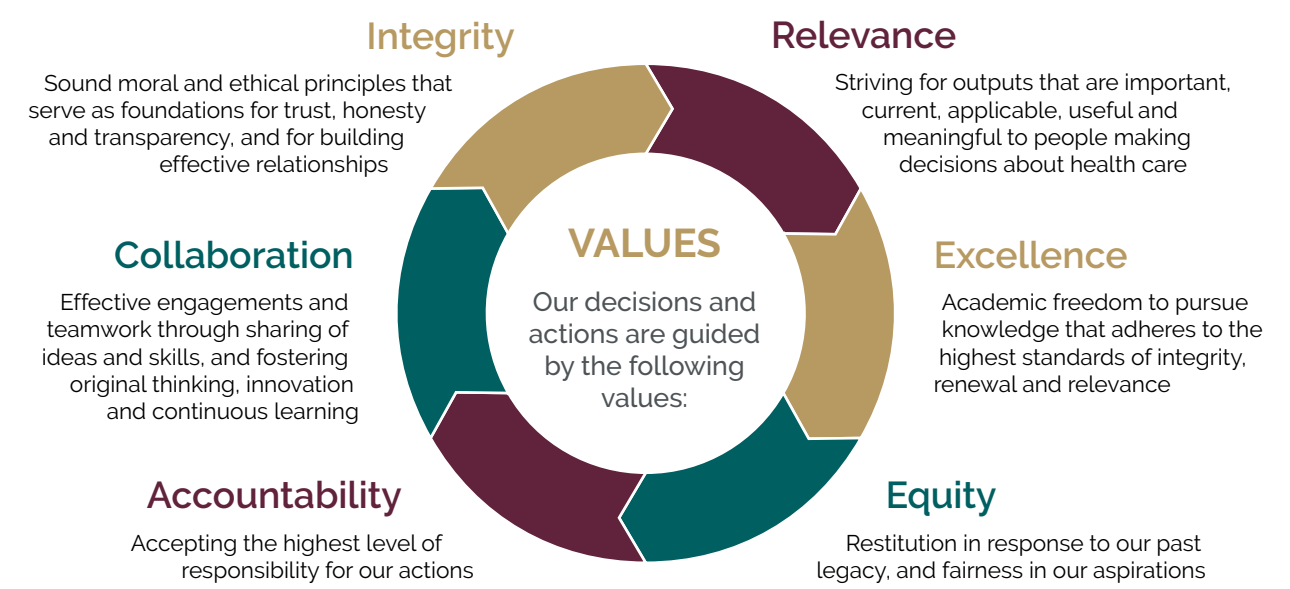
Who we are

The CEBHC is a beacon on the African continent in advancing evidence-based health care at a local and, increasingly through collaborations, global scale. In a world where the lines between fact, fiction, myth and fake news are blurred, the raison d'être for the endeavours of the Centre of Evidenced-based Health Care has become a compelling necessity.

VISION, MISSION & GUIDING PRINCIPLES

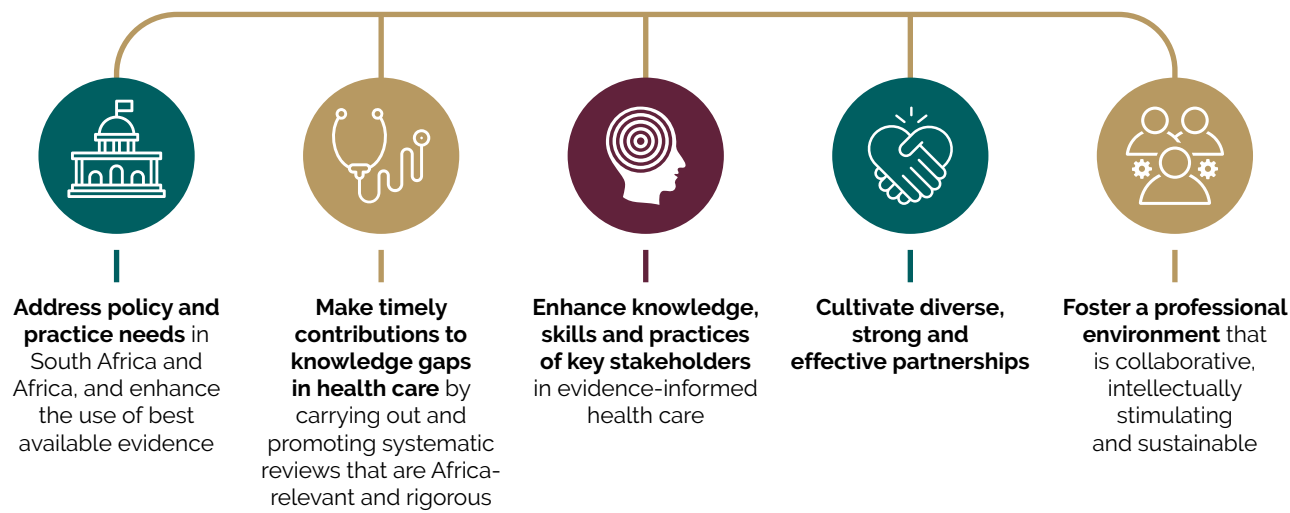
Vision
A world where every member of society receives equitable and quality health care supported through evidence-informed decision-making.

Mission
To be a Centre of Excellence in Africa in evidence synthesis and knowledge translation in health, through innovation, collaboration and distinction in research.



STRATEGIC OBJECTIVES

We use multipronged strategies to increase uptake of evidence into policy and practice:



GOVERNING BODY

The work of the CEBHC is guided by the Constitution of the Centre. The Centre is managed by a Director and her Management Committee, while oversight is provided by an Advisory Committee.

Advisory committee



PROF TARYN YOUNG
CEBHC Director



PROF ELMI MULLER
Dean, Faculty of Medicine and Health Sciences



DR THERESE FISH
Vice-Dean, Clinical Services and Social Impact



PROF ANGELA DRAMOWSKI
Department of Paediatrics and Child Health



DR TANIA BRODOVCKY
Research Capacity Development and Funding



DR ROSE ORONJE
The African Institute for Development Policy (AFIDEP)



PROF MARINA JOUBERT
Centre for Research on Evaluation, Science and Technology



DR KEITH CLOETE
Provincial Department of Health



MS SANDHYA SINGH
National Department of Health



PROF JIMMY VOLMINK
Wellcome Trust



DR ELVIS TEMFACK
Africa CDC

Management committee

The Management Committee, consisting of the Director, head of the Department of Global Health and two to three staff members, meets regularly to discuss management issues. Specific individuals are co-opted when necessary, based on the agenda of the specific Management Committee meeting.

CEBHC TEAM

The work of the CEBHC is supported by an excellent team of full-time and part-time staff as well as external staff appointed as extra-ordinary staff.



PROF TARYN YOUNG
Director



PROF CELESTE NAUDE
Associate Professor



PROF PETER NYASULU
Associate Professor



PROF TONYA ESTERHUIZEN
Associate Professor



DR ANKE ROHWER
Senior Researcher



DR MARIANNE VISSER
Senior Researcher



DR NASREEN JESSANI
Senior Researcher



DR MICHAEL MCCAUL
Senior Lecturer



MS ANEL SCHOONEES
Senior Lecturer



DR AMANDA BRAND
Senior Researcher



DR MOLEEN DZIKITI
Senior Researcher



DR SUSAN VAN WYK
Senior Researcher



MR DANIEL MASHISHI
Biostatistician



DR IDRIS IBRAHIM KALLON
Postdoc



DR INNOCENT MAPOSA
Senior Biostatistician



DR LESTER KAPANDA-PHIRI
Postdoc



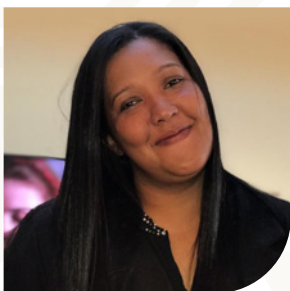
DR STEVE JACOBS
Lecturer



MS TRACI NAIDOO
Project Manager



MS LIESEL FLOOR
Project Manager



MS ANTHEA HENRY
Administrator



MS LEE-ANN HUMAN
Receptionist

Extraordinary staff appointments

The work of the CEBHC is also supported by the following extraordinary staff:

- | | |
|---|---|
| Dr Merga Belina Feyasa – Extraordinary Senior Lecturer | Mr Tawanda Chivese – Extraordinary Lecturer |
| Dr Ingrid Eshun-Wilsonova – Extraordinary Senior Lecturer | Assoc Prof Eleanor Atieno Ochodo – Extraordinary Lecturer |
| Dr Damian Kajunguri – Extraordinary Senior Lecturer | Dr Alfred Musekiwa – Extraordinary Lecturer |
| Dr Amir Afrogheh – Extraordinary Senior Lecturer | Prof Rhoderick Machekano – Extraordinary Professor |
| Dr Thomas Elliot Nyirenda – Extraordinary Senior Lecturer | Prof Jim Todd – Extraordinary Professor |
| Prof Sara Cooper – Extraordinary Associate Professor | Prof Lawrence Mbuagbaw – Extraordinary Professor |
| Prof Geoffrey Libero Fatti – Extraordinary Lecturer | |

PARTNERSHIPS

The Centre works in collaboration with a number of local, regional and international institutions, and staff serve on various national and international committees. The key principles are to encourage dialogue, enhance EBHC activities and avoid unnecessary duplication.

PROVINCIAL



BETTER TOGETHER.









NATIONAL







REGIONAL



















INTERNATIONAL



































Our advances
in research,
training and
knowledge
translation

News

The following section highlights the activities and achievements of the CEBHC during 2023 in shaping local and international health decisions, moving forward together in our advancements in research, training and knowledge translation.

How we performed in 2023

WE PUBLISHED:



24

Peer-reviewed
journal articles

WE PRESENTED:



07

National
conference
presentations



20

International
conference
presentations

WE SUPERVISED AND PROVIDED METHODOLOGICAL MENTORSHIP AND SUPPORT TO:



23

Masters
students



13

PhD
students



02

Postdoctoral
research fellows

BELGIAN REDCROSS AND CEBHC COLLABORATE TO SCOPE AND INFORM PREHOSPITAL CARE PRIORITIES FOR INJURIES



Evidence-based
by CEBaP

BELGIAN RED CROSS AND CEBaP

Launched in 2009 the Centre for Evidence-Based Practice (CEBaP) is a non-profit global centre located in Belgium that supports humanitarian and development aid activities, including those of Belgian Red Cross. CEBaP is focused on research in the prehospital stage of care, including first aid assistance and disaster preparedness, especially in low-to-middle income countries.

Globally, injuries account for millions of deaths worldwide, where most people die from injuries well before they reach a hospital. First aiders and prehospital providers are the first response to these emergencies, where reliable and evidence-based clinical guidance plays an essential role in delivering appropriate care.

Towards solutions, the CEBHC and Centre for Evidence-based Practice (CeBaP), part of the Belgian Red Cross-Flanders collaborated to scope available injury guidelines, as well as prioritise injury topics for guideline development and adaptation.

This project, led by CEHBC staff, entailed a scoping review of injury guidelines and virtual stakeholder engagement workshop with first aid responders, paramedics, and emergency service providers from nine African countries. The peer-reviewed paper outlines key priorities for future guideline development, these include injuries linked to road traffic accidents among others. The scoping review and priority setting process informed guidelines of [basic first aid for road traffic injuries in Africa](#), supported by Centre staff (Dr McCaul), and a follow-up synthesis project exploring community-based disaster preparedness interventions, which is ongoing.

Kuupiel D., Jessani N.S., Boffa J. *et al.* Prehospital clinical practice guidelines for unintentional injuries: a scoping review and prioritisation process. *BMC Emerg Med* **23**, 27 (2023). <https://doi.org/10.1186/s12873-023-00794-x>



Stakeholder engagement workshop

CEBHA+ AND INTEGRATED KNOWLEDGE TRANSLATION

Integrated knowledge translation (IKT) aims at continuous engagement between researchers and decision-makers to guide evidence-informed decision making (EIDM).

From 2017 to 2022, the Collaboration for Evidence-based Healthcare and Public Health in Africa (CEBHA+) developed, implemented, and evaluated an IKT approach to facilitate continuous engagement with decision-makers in policy and practice with the aim to enhance evidence-informed decision-making. This paper describes the overall CEBHA+ IKT approach and reports on the development, implementation and monitoring of unique, site-specific IKT strategies in Ethiopia, Malawi, Rwanda, South Africa, Uganda and Germany, using the template for intervention description and replication (TIDieR checklist).

Sell K., Jessani N.S., Mesfin F. *et al.* Developing, implementing, and monitoring tailored strategies for integrated knowledge translation in five sub-Saharan African countries. *Health Res Policy Sys* **21**, 91 (2023). <https://doi.org/10.1186/s12961-023-01038-x>

Within the CEBHA+, the IKT component included capacity building and mentoring of teams from Malawi, Ethiopia, Rwanda, Uganda and South Africa and resulted in identifying priority stakeholders, developing tailored stakeholder engagement strategies, and developing and disseminating issue briefs to inform EIDM. We reflected on the IKT process and how this affected policy and practice in different contexts. In this paper we describe these IKT journeys through illustrative stories from each country.

Jessani NS, Delobelle P, Balugaba BE, Mpando TL, Ayele FM, Ntawuyirushintge S, Rohwer A: Integrated Knowledge Translation for Non-Communicable Diseases: Stories from Sub-Saharan Africa. *Annals of Global Health* 2023. <https://annalsofglobalhealth.org/articles/10.5334/aogh.4228>

DEVELOPMENT OF 2023 WHO CHILD WASTING GUIDELINE SUPPORTED BY CEBHC GUIDELINE METHODOLOGISTS



[View the guideline](#)



WHAT IS A GUIDELINE?

Any document containing recommendations for clinical or public health practice or policy.

Recommendations are actionable statements that tell users what they can or should do in specific situations to achieve the best health outcomes possible, individually or collectively. They usually offer a choice among different interventions or measures with an anticipated positive impact on health and implications for use of resources. Recommendations help users make informed decisions on whether to undertake specific interventions, clinical tests or public health measures, and on where and when to do so, and can help users select and prioritise across a range of potential interventions.

Source: WHO handbook for guideline development, 2014

In November 2023, the World Health Organisation (WHO) released a new guideline on prevention and management of wasting and nutritional oedema (acute malnutrition) in infants and children under 5 years. This was the culmination of an intensive three-year guideline development process with the CEBHC's Prof Celeste Naude and Dr Michael McCaul serving as guideline methodologists.

During best practice guideline development processes, methodologists play a role in ensuring that guidelines are developed in accordance with standards and methods. Aligned with WHO standards and methods for guideline development, the 2023 guideline involved collaborative and transparent decision-making, based on the Grading of Recommendations, Assessment, Development and Evaluations (GRADE) approach. "For this guideline we worked collaboratively with the WHO technical teams and 27 guideline development group members with expertise across the guideline's four focus areas, and with research, programmatic, and clinical experience. This group included representation from all WHO regions where wasting and nutritional oedema persist" explains Michael.

Building on previous guidance, the 2023 guideline has a wide scope and aims to integrate care across inpatient and outpatient/community settings. "The guideline covers care of infants at risk of poor growth and development, infants and children with moderate wasting, severe wasting and nutritional oedema, as well as prevention of wasting and nutritional oedema. It contains 12 good practice statements relevant to the prioritised guideline questions and 21 recommendations, 14 of which are new and 7 of which are updated from the 2013 guideline on severe wasting and nutritional oedema", said Celeste. The two methodologists served as methods chairs for the numerous guideline development group meetings, both virtual and in-person, in Geneva. They have described their involvement as a 'wonderful opportunity to contribute to this important work by the WHO'.

The WHO committed to producing this independent, evidence-informed normative guidance in 2019 as part of the [Global Action Plan \(GAP\) on Child Wasting](#), a consolidated framework for action to accelerate progress in preventing and managing child wasting and the achievement of the Sustainable Development Goals. The new 2023 guideline is aimed at helping governments and other implementers select, action, and strengthen evidence-informed strategies to prevent and manage wasting and nutritional oedema.



MORE ABOUT CHILD WASTING

Child wasting is the life-threatening result of poor nutrient intake, recurrent illnesses, maternal malnutrition, low birthweight, poor feeding and care practices, or infection exacerbated by food insecurity, limited access to drinking water and poverty. Children suffering from wasting have weakened immunity, are susceptible to long-term developmental delays and face an increased risk of death, particularly when wasting is severe.

An estimated 45 million (6.8%) infants and children under five years of age suffer from wasting annually and hundreds of thousands more are estimated to suffer from nutritional oedema, characterised by a swollen face, feet and limbs. The number of children with wasting globally keeps increasing dramatically because of multiple conflicts, epidemics and food insecurity, including that caused by droughts and flooding. However, wasting is not only a characteristic of crisis. About two thirds of all children with wasting live in places that are not facing emergencies.

Children suffering from severe wasting require early detection and timely treatment and care to survive. Children living in vulnerable contexts and at risk of malnutrition need immediate preventative actions.

Source: <https://www.childwasting.org/>

READ-IT EVIDENCE IS INFORMING GUIDELINES AND CHANGING PRACTICE FOR PEOPLE WITH TB WORLDWIDE

The Research, Evidence and Development Initiative (READ-It) provides core sustained financial support to institutions in South Africa, India, Norway, and the UK, to do evidence synthesis and related activities aimed at improving health outcomes in the poor and vulnerable in low- and middle-income countries (LMICs). **Tuberculosis (TB)** continues to cause great suffering worldwide and is one of READ-It's focus areas of work. We cover key policy areas which include **screening, diagnosis, and treatment of drug-sensitive and drug-resistant TB**. In addition, we have a growing research expertise **exploring and understanding perspectives of patients, communities, and implementers** affected by TB interventions and policies.

Here, we describe TB outputs in **four areas**, enabled by READ-It over a 5-year period.



This material is associated with the Research, Evidence and Development Initiative (READ-It). READ-It (project number 300342-104) is funded by UK aid from the UK government; however, the views expressed do not necessarily reflect the UK government's official policies.

Prepared by Tamara Kreda¹, Deirdre Walshe² and Celeste Naude³ on behalf of READ-It Partners.

¹Health Systems Research Unit, South African Medical Research Council, South Africa. ²Cochrane Infectious Diseases Group, Liverpool School of Tropical Medicine, UK. ³Centre for Evidence-based Health Care, Division of Biostatistics and Epidemiology, Department of Global Health, Faculty of Medicine and Health Sciences, Stellenbosch University, South Africa.



Left to Right: Prof Taryn Young, Dr. Mercy Mulaku, Dr. Caroline Osoro and Associate Prof. Eleanor Ochodo.

PHD GRADUATES

A successful PhD completion

On 26th March 2024, Dr. Caroline Osoro and Dr. Mercy Mulaku were awarded their PhD degrees from Stellenbosch University. Caroline, a medical doctor, and Mercy, a pharmacist and university lecturer, were PhD researchers based at the Centre for Global Health Research at the Kenya Medical Research Institute (KEMRI) from August 2020 to March 2024. At Stellenbosch University, they were affiliated to the Department of Global Health, Division of Epidemiology and Biostatistics, Faculty of Medicine and Health Sciences.

Their PhD projects were supported through a grant awarded to Stellenbosch University from the UK Medical Research Council. The grant was a collaboration between Stellenbosch University, KEMRI and the Liverpool School of Tropical Medicine. It was awarded to establish a collaborative program of science in evidence synthesis, health guideline adaptation and strengthen the existing knowledge translation platforms in KEMRI.

Caroline's PhD, *"Strengthening evidence to policy pathways to improve management of malaria in pregnancy"*, included an individual participant meta-analysis, aggregate meta-analysis, scoping review and two observational studies through which she assessed the impact of antifolate resistance on malaria treatment in pregnancy, assessed healthcare providers' knowledge and perceptions in managing malaria in pregnancy and how scientific evidence is transformed into policy. Caroline received two awards during her PhD; for excellence in partnering in malaria research from the Centers of Disease Control, and the Young investigators award from the American Society of Tropical Medicine and Hygiene. She also developed policy briefs for the Kenya National Malaria Control Program.

Mercy's PhD, *"Pre-treatment loss to follow-up in adults with pulmonary tuberculosis in Kenya - contributing factors and evidence-based interventions"*, comprised a qualitative evidence synthesis, scoping review, primary qualitative study and an observational study assessing the scope, factors, and strategies to reduce pre-treatment loss to follow-up in adults with pulmonary tuberculosis. Mercy received the best poster presentation award at KEMRI's annual scientific conference and worked with the Kenyan ministry of health in developing the Kenya Essential Diagnostics List Guideline (an adaptation of the WHO essential diagnostics list guideline).

We appreciate the collaborative support of the supervisory team from KEMRI (Dr. Simon Kariuki), Stellenbosch University (Prof Taryn Young & Assoc Prof. Eleanor Ochodo) and Liverpool School of Tropical Medicine (LSTM) (Prof Feiko ter Kuile and Dr. Karen Steingart).

We are very proud of their high-quality PhD's completed in a timely and enthusiastic manner. We wish them the very best of success and wellbeing in their new roles and future careers.

Lynn Hendricks: SA's first Global Minds PhD scholar

Lynn Hendricks, Joint SU-Leuven PhD: *Envisioning enabling environments for adherence to ART for young women living with perinatal HIV infections in South Africa: An arts-based materialism perspective.*

This research towards a Stellenbosch University-Leuven joint degree aimed to understand the experience of young women living with perinatal HIV infection, how they negotiate adherence to antiretroviral treatment within their environments, and how environments could be enabled to support adherence. The evidence synthesis conducted shaped the subsequent primary research, and storyboarding improved understanding of adherence to a lifelong treatment.

(Two graduations: KU Leuven and Stellenbosch University, 2023)



Left to Right: Prof Karin Baatjes, FMHS Vice Dean: Learning and Teaching with Dr Lynn Hendricks, and her SU study supervisor Prof Taryn Young

SHORT COURSES/WORKSHOPS

The CEBHC has successfully presented the following short courses and workshops.

Primer in Systematic Reviews

Online

The overall aim is for participants to find, appraise, interpret and consider the use of systematic reviews and systematic reviews using network meta-analysis (NMA).

Offered since: 2016

No. of participants who successfully completed it: Over 400

Participant feedback:

Excellent course. Really well organised, very helpful and interactive. I gained new skills and will be able to implement new acquired skills.

Global Network Meta-Analysis

Face to face

The aim of the workshop is to develop local and regional capacity in conducting systematic reviews using network meta-analysis in STATA for health researchers, decision makers and students in HIV/AIDs.

Offered since: 2020

No. of participants who successfully completed it: Over 50

Participant feedback:

Thank you very much for a very informative course. The course content was of a high standard and the presentation was excellent.

Qualitative Evidence Synthesis

Online / face to face

This short course aims to provide academic staff, students, researchers, reviewers and editors with the understanding of the principles to conduct and interpret qualitative systematic reviews.

Offered since: 2018

No. of participants who successfully completed it: Over 50

Participant feedback:

Very well planned, organized and executed. Very helpful and enjoyed it a lot. The course content was covered effectively and is very relevant to my objectives.

Evidence informed decision making

Online / face to face

The objectives of the course:

- Enhance the knowledge and capacities of researchers to better understand the policy, practice, public and media arena
- Enhance the skills and capacities of researchers to package their research in a way that is accessible to research users (decision-makers, practitioners, clinicians, media, communities)
- Encourage researchers to foster trusting relationships with research users and create or capitalize on opportunities for engagement

Offered since: 2018

No. of participants who successfully completed it: Over 50

Participant feedback:

Great course. Learned a lot. The knowledge I gained will be implemented for sure. New skills were acquired. Content was covered very good.

Engaging with decision makers

Online / face to face

The objectives of the course:

- Remind participants of concepts covered in the precursor foundation course on the importance of Evidence-Informed Decision Making, as well as key concepts relevant to the science, art & context complexity of Knowledge Translation.
- Introduce participants to facilitators and barriers to engaging with decision-makers and how these can be managed
- Encourage researchers to foster trusting relationships with research users and create or capitalize on opportunities for engagement
- Enhance the skills and capacities of researchers to package their research in a way that is relevant and accessible to policy as well as practice decision-makers
- Introduce the utilisation of an issue-brief- a key decision making aid that can be produced and shared by researchers to influence decision-making

Offered since: 2018

No. of participants who successfully completed it: Over 30

Participant feedback:

Fantastic! The course encouraged independent and critical thinking. The course material was useful and will be used in future for reference tools.

Engaging with the media

Online / face to face

The objectives of the course:

- Remind participants of concepts covered in the precursor foundation course on the importance of Evidence-Informed Decision Making, as well as key concepts relevant to the science, art & context complexity of Knowledge Translation.
- Introduce participants' to how the media operates, the media landscape
- Introduce participants to how science news, features and editorials can be produced without compromising the quality of the scientific information.
- Inculcate an understanding and desire to build relations and engage with the media

Offered since: 2020

No. of participants who successfully completed it: Over 30

Participant feedback:

The course content flowed logically and the course material was useful for future use.

Evidence based public health

Face to face

The workshop aims to introduce the concepts of evidence-based public health (EBPH) and focuses on finding, appraising, interpreting and applying best evidence to public health questions relevant to the African setting

Offered since: 2018

No. of participants who successfully completed it: Over 130

Participant feedback:

The quality of the course content was of a high standard. The course material was useful and will be used as a reference tool in future.

Addenda

Key outputs 2023

ADDENDUM A: RESEARCH OUTPUTS

Peer-reviewed publications

ALBARQOUNI L, ABUKMAIL E, MOHAMMEDALI M, ELEJLA S, ABUELAZM M, SHAIKHKHALIL H, PATHIRANA T, PALAGAMA S, EFFA E, OCHODO EA, ET AL. Low-Value Surgical Procedures in Low- and Middle-Income Countries: A Systematic Scoping Review . *JAMA Network Open* 2023; **6**(11):e2342215, 21 pages.

FUNNEL S, JULL J, MBUAGBAW LCE, WELCH V, DEWIDAR O, WANG X, LESPERANCE M, GHOGOMU E, RIZVI A, AKL E, KREDO T, WIYSONGE CSU, YOUNG TN, ET AL. Improving social justice in observational studies: protocol for the development of a global and Indigenous STROBE-equity reporting guideline. *International Journal for Equity in Health* 2023; **22**(1):55, 14 pages.

HENDRICKS LA, UWIMANA-NICOL J, YOUNG TN. Decision makers perceptions and experiences of developing population-level interventions targeting risk factors for hypertension and diabetes in South Africa: a qualitative study. *BMC Health Services Research* 2023; **23**(1):146, 10 pages.

HENDRIKSE C, NGAH VD, KALLON II, THOM G, LEONG TD, COHEN K, MCCAUL MG. Signal of harm in morphine use in adults with acute pulmonary oedemea: A rapid systematic review. *SAMJ South African Medical Journal* 2023; **113**(8):1333-1339.

ISLAM N, AL-GHITA MK, EBRAHIMZADEH S, DAWIT H, PRAGER R, ALVAREZ GG, COHEN JF, KOREVAAR DA, DEEKS JJ, VERBAKEL JY, OCHODO EA, ET AL. Prognostic accuracy of imaging findings for predicting morbidity and mortality in patients with COVID-19. *Cochrane Database of Systematic Reviews* 2023; **2023**(6):Art. No.: CD015318, 13 pages.

JESSANI N, DELOBELLE P, BALUGABA BE, MPANDO T, AYELE F, NTAWUYIRUSHINTEGE S, ROHWER AC. Integrated knowledge translation for non-communicable diseases: Stories from Sub-Saharan Africa. *Annals of Global Health* 2023; **89**(1):87, 6 pages.

KARAMAGI H, ODUWOLE OE, SY S, ADAMU AA, SEYDI ABW, WIYSONGE CSU. Scoping review of African health histories: a protocol. *BMJ Open* 2023; **13**:e075787, 4 pages.

KATOTO CPDM, KAKUBU MAM, TAMUZI J, BRAND AS, AYUK A, BYAMUNGU L, WIYSONGE CSU, GRAY G. Immunogenicity and reactivity of COVID-19 Pfizer-BioNTech (Bnt162b2) mRNA vaccination in immunocompromised adolescents and young adults: a systematic review and meta-analyses. *Expert Review of Vaccines* 2023; **22**(1):378-392.

KUUPIEL D, JESSANI N, BOFFA JM, NAUDE CE, DE BUCK E, VANDEKERCKHOVE P, MCCAUL MG. Prehospital clinical practice guidelines for unintentional injuries: a scoping review and prioritisation process. *BMC Emergency Medicine* 2023; **23**(1):27, 14 pages.

LAERMANS J, SCHEERS H, VANDEKERCKHOVE P, DE BUCK E. Friendly visiting by a volunteer for reducing loneliness or social isolation in older adults: A systematic review. *Campbell Systematic Reviews* 2023; **19**(4):e1359, 66 pages.

MECASKEY J, VERBOOM B, LIVERANI M, MIJUMBI-DEVE R, JESSANI N. Improving institutional platforms for evidence-informed decision-making: getting beyond technical solutions. *Health Research Policy and Systems* 2023; **21**(1):5, 9 pages.

MULAKU MN, NYAGOL B, OWINO E, OCHODO EA, YOUNG TN, STEINGART KR. Factors contributing to pre-treatment loss to follow-up in adults with pulmonary tuberculosis: a qualitative evidence synthesis of patient and healthcare worker perspectives. *Global Health Action* 2023; **16**(1):2148355, 14 pages.

NAJAFABADI BT, RAYNER DG, SHOKRAEE K, SHOKRAIE K, PANAHI P, RASTGOU P, SEIRAFIANPOUR F, LANDI FM, ALINIA P, PARNIANFARD N, SCHOONEES A, NAUDE CE, ET AL. Obesity as an independent risk factor for COVID-19 severity and mortality. *Cochrane Database of Systematic Reviews* 2023; **2023**(5):Art. No.: CD015201, 782 pages.

ROCHA T, ALLOTEY J, PALACIOS A, VOGEL J, SMITS L, CARROLI G, MISTRY H, YOUNG TN, QURESHI Z, CORMICK G, ET AL. Calcium supplementation to prevent pre-eclampsia: protocol for an individual participant data meta-analysis, network meta-analysis and health economic evaluation. *BMJ Open* 2023; **13**(5):e065538, 9 pages.

ROHWER AC, TOEWS I, UWIMANA-NICOL J, NYIRENDA JLZ, NIYIBIZI JB, AKITENG AR, MEERPOHL J, BAVUMA CM, KREDO T, YOUNG TN. Models of integrated care for multi-morbidity assessed in systematic reviews: a scoping review. *BMC Health Services Research* 2023; **23**(1):894, 17 pages.

SAGAM CK, WERE LM, OTIENO JA, MULAKU MN, KARIUKI S, OCHODO EA. Quality assessment of clinical practice guidelines in Kenya using the AGREE II tool: a methodological review. *BMJ Open* 2023; **13**(7):e074510, 10 pages.

SELL K, JESSANI N, MESFIN F, REHFUESS EA, ROHWER AC, DELOBELLE P, BALUGABA BE, SCHMIDT BM, KEDIR K, MPANDO T, KREDO T, ET AL. Developing, implementing, and monitoring tailored strategies for integrated knowledge translation in five sub-Saharan African countries. *Health Research Policy and Systems* 2023; **21**:91, 21 pages.

SNEAD CM, SENESCHALL CC, DAVIDS MR, YOUNG TN, CASKEY FJ, EFFA E. Quality of life of patients with kidney failure in sub-Saharan Africa: protocol for a systematic review of quantitative studies. *African Journal of Nephrology* 2023; **26**(1):53-61.

SPIES R, POTTER M, HOLLAMBY R, VAN DER WALT S, HOHLFELD A, OCHODO EA, VAN ZYL-SMIT R. Sputum color as a marker for bacteria in acute exacerbations of chronic obstructive pulmonary disease: A systematic review and meta-analysis. *Annals of the American Thoracic Society* 2023; **20**(5):738-748.

TANKWANCHI AS, JACA A, NDLAMBE A, ZANTSI ZP, BOWMAN B, GARRISON M, LARSON HJ, VERMUND SH, WIYSONGE CSU. Non-COVID-19 vaccine hesitancy among migrant populations worldwide: a scoping review of the literature, 2000-2020. *Expert Review of Vaccines* 2022; **21**(9):1269-1287.

VILYTE GB, FOX T, ROHWER AC, VOLMINK JA, MCCAUL MG. Digital devices for tuberculosis treatment adherence. *Cochrane Database of Systematic Reviews* 2023; **2023**(6):Art. No.: CD015709, 16 pages.

WANG X, DEWIDAR O, RIZVI A, HUANG J, DESAI P, DOYLE R, GHOGOMU E, RADER T, NICHOLLS SG, ANTEQUERA A, WIYSONGE CSU, MBUAGBAW LCE, YOUNG TN, ET AL. A scoping review establishes need for consensus guidance on reporting health equity in observational studies. *Journal of Clinical Epidemiology* 2023; **160**:126-140.

VAN NIEKERK J, FAPOHUNDA T, ROHWER A, MCCAUL M: Quality of systematic reviews in African emergency medicine: a cross-sectional methodological study. *African Journal of Emergency Medicine* 2023, **13**(4):331-338.

ROHWER C, ROHWER AC, MCCAUL M, HOFMEYR GJ: Hormonal contraception for women at risk of HIV infection. *Cochrane Database of Systematic Reviews* 2023(9).

International conference presentations

Presenter	Title of presentation	Conference / Event	Location	Type
Trudy D Leong (including Michael McCaul)	Extensive collaboration to mobilise rapid evidence-informed decision-making for the National treatment guidelines for COVID-19 in South Africa	African Evidence Network Evidence 2023	Online	Oral
Michael McCaul	Global Evidence, Local Adaptation (GELA) project: Tailoring GRADE adolopment approaches for Malawi, Nigeria and South Africa. Guidelines International Network (G-I-N)	Guidelines International Network 2023	Glasgow, UK	Oral
Irvin Kendall (including Michael McCaul)	The importance of a multidisciplinary team in developing an evidence-based guideline on first aid for road safety in Africa	Cochrane Colloquium 2023	London, UK	Poster
Farid Foroutan (inlcuding Michael McCaul and Celeste Naude)	Risk Ratio vs Odds Ratio: Optimal presentation in evidence profiles	Cochrane Colloquium 2023	London, UK	Poster
Michael McCaul	Exploring trial publication and research waste in COVID-19 randomised trials of hydroxychloroquine, corticosteroids, and vitamin D: a meta-epidemiological cohort study	Cochrane Colloquium 2023	London, UK	Poster
Marianne Visser (including Celeste Naude, Amanda Brand)	A repository of Cochrane nutrition systematic reviews: providing a nutrition lens on the Cochrane Library	Cochrane Colloquium 2023	London, UK	Poster
Amanda Brand (including Anke Rohwer, Celeste Naude)	A rapid, fit-for-purpose QES for a WHO guideline: processes and challenges	Cochrane Colloquium 2023	London, UK	Poster
Amanda Brand (including Sarah Gordon, Marianne Visser, Anel Schoonees, Celeste Naude)	Scoping reviews for WHO guidelines: using a two-tiered search strategy to balance efficiency and comprehensiveness	Cochrane Colloquium 2023	London, UK	Oral
Tamara Kredo (including Celeste Naude, Amanda Brand, Michael McCaul, Idriss Kallon, Taryn Young)	Scope, quality and reporting of clinical practice guidelines for newborn and child health in South Africa, Nigeria, and Malawi	Cochrane Colloquium 2023	London, UK	Oral
Solange Durao (including Celeste Naude, Amanda Brand, Michael McCaul)	Identifying guideline needs for newborn and child health in South Africa, Malawi and Nigeria: a priority-setting exercise	Cochrane Colloquium 2023	London, UK	Oral

Presenter	Title of presentation	Conference / Event	Location	Type
Celeste Naude (including Amanda Brand, Marianne Visser)	Citations of Cochrane nutrition reviews in guidelines: appraising the “payback” on investment in nutrition evidence synthesis	Cochrane Colloquium 2023	London, UK	Poster
Luke Wolfenden (including Celeste Naude)	Introducing The Cochrane Nutrition & Public Health Thematic Group	Cochrane Colloquium 2023	London, UK	Poster
Rachel Richardson (including Celeste Naude, Anel Schoonees)	Prioritising Cochrane reviews on the prevention and treatment of obesity: a mapping and stakeholder consultation project	Cochrane Colloquium 2023	London, UK	Oral
Celeste Naude (including Michael McCaul)	Prioritising topics, formulating questions, and selecting outcomes for a World Health Organization nutrition guideline	Cochrane Colloquium 2023	London, UK	Oral
Celeste Naude (including Amanda Brand, Marianne Visser, Sarah Gordon, Anel Schoonees, Taryn Young, Jimmy Volmink)	READ-It project: catalysing influential nutrition evidence synthesis and capacity building in LMICs	Cochrane Colloquium 2023	London, UK	Poster
Innocent Maposa (including Ronald Chinovhiringa, Dr Zvifadzo Matsena-Zingoni)	Spatiotemporal modelling of COVID-19 in-hospital mortality risk in South Africa: <i>assessing the effects of health systems factors</i>	Southern Africa Mathematical Sciences Association (SAMSA)-MASAMU colloquium hosted by Auburn University, USA.	Online	Oral
Anel Schoonees (including Celeste Naude, Taryn Young)	Existing strategies aimed at improving health intervention research reporting in mass media: a scoping review	PCST (Public Communication of Science and Technology) 2023	Rotterdam, The Netherlands	Oral
Anel Schoonees (including Celeste Naude, Taryn Young)	Demonstration: Media-Science Engagement App	PCST (Public Communication of Science and Technology) 2023	Rotterdam, The Netherlands	Oral
Anke Rohwer (including Veranyuy Ngah, Dimitris Mavridis, Taryn Young, Michael McCaul)	Enhancing capacity for network meta-analysis in Sub-Saharan Africa	Cochrane Colloquium 2023	London, UK	Oral
Anke Rohwer (including Jake Burns, Taryn Young)	See one, do one, teach one – Building capacity of African teachers of evidence-based health care through experiential learning	10 th International Conference for EBHC Teachers and Developers; 10 th Conference of the International Society for EBHC	Taormina, Italy	Oral

National conference presentations

Presenter	Title of presentation	Conference / Event	Location	Type
Lisa Fincham (including Michael McCaul)	Exploring trial publication and research waste in COVID-19 randomised trials of hydroxychloroquine, corticosteroids, and vitamin D: a meta-epidemiological cohort study	Stellenbosch University Academic Year day 2023	Cape Town, South Africa	Oral
Celeste Naude (including Amanda Brand, Marianne Visser)	The database of Cochrane nutrition systematic reviews: making it easier to find nutrition reviews and identify gaps	National Nutrition Congress	Cape Town, South Africa	Oral
Celeste Naude (including Amanda Brand, Anel Schoonees Jimmy Volmink)	Low-carbohydrate versus balanced-carbohydrate diets for reducing weight and cardiovascular risk: a Cochrane systematic review	National Nutrition Congress	Cape Town, South Africa	Oral
Celeste Naude (including Amanda Brand, Marianne Visser, Anel Schoonees)	Replacing salt with lowsodium salt substitutes (LSSS) for cardiovascular health in adults, children and pregnant women: a Cochrane systematic review	National Nutrition Congress	Cape Town, South Africa	Oral



Staff attended various conferences

Presenter	Title of presentation	Conference / Event	Location	Type
Natasha Gloeck (including Michael McCaul)	Adaptive complex systems to mobilise rapid evidence-informed decision-making for the National treatment guidelines for COVID-19 in South Africa	3rd Annual Conference on Pharmaco-epidemiology	Cape Town, South Africa	Oral
Innocent Maposa	Heritability of vascular health across three generations in the Birth to Twenty-Plus Cohort: Application of Restricted Resampling Methods and Hierarchical Mixed Effects Models	Southern Africa Mathematical Sciences Association (SAMSA) 2023 Conference	South Africa	Oral
Anke Rohwer	Publication of results generated via Artificial Intelligence	Research Ethics Seminar Series	Cape Town, South Africa	Oral

Postgraduate student supervision

Student Name	Type	Institution	Topic	Supervisor	Status
Natasha Gloeck	PhD	SU	Exploring the inclusion of patient preferences in national and international guidelines for tuberculosis	Tamara Kredo Michael McCaul	Ongoing
Prudence Mazibuko	Masters, Clinical Epidemiology	SU	An evaluation of the capacity development of GELA staff members; mixed-methods study	Michael McCaul Anke Rowher	Ongoing

Student Name	Type	Institution	Topic	Supervisor	Status
Nishanta Singh	Masters, Clinical Epidemiology	SU	Evaluating the incidence of sexually transmitted infections in HIV negative individuals taking oral pre-exposure prophylaxis (PrEP) in an HIV prevention trial	Michael McCaul	Ongoing
Marlize Burger	Masters, Clinical Epidemiology	SU	The quality of systematic reviews in orthopaedic surgery: A scoping review	Michael McCaul	Ongoing
Cameron Gordon Forbes	Masters, Medicine	SU	Factors affecting time to disposition at a District Hospital Emergency Centre in Cape Town, South Africa	Michael McCaul	Ongoing
Jacques van Niekerk	Masters, Clinical Epidemiology	SU	Quality of systematic reviews in African emergency medicine: A methodological study	Michael McCaul Anke Rohwer	Graduated March 2023 (cum laude)
Lisa Fincham	Masters, Clinical Epidemiology	SU	Research waste in COVID-19: A meta-epidemiological study	Michael McCaul	Graduated March 2023 (cum laude)
Eric Tornu	PhD	SU	Best practice guidelines for professional nurses to provide self-management support to adults with TB/HIV coinfection in greater Accra, Ghana	Portia Jordan Michael McCaul	Submitted
Kopano Dube	Masters, Clinical Epidemiology	SU	Adverse birth outcome case definitions associated with maternal HIV and antiretroviral therapy use in pregnancy: A scoping review	Michael McCaul Amy Slowgrove	Graduated
Dirk Kotze	Masters, Public Health	UJ	Survival and functional outcome after prehospital endotracheal intubation in non-traumatic brain pathologies: A retrospective cohort study	Michael McCaul Chris Stein	Graduated
Irvin Kendall	PhD	KU Leuven	Evidence ecosystem for first aid training in low- and middle-income countries	Emmy Buck Bert Avau Bert Aertgeerts Michael McCaul	Ongoing
Lize-Mari Swanepoel	Masters, Clinical Epidemiology	SU	Decision tools and resources for conducting a network meta-analysis systematic review: A scoping review	Michael McCaul Amanda Brand	Graduated March 2024
Christa Rohwer	Masters, Clinical Epidemiology	SU	Hormonal contraception for women at risk of HIV infection	Anke Rohwer Michael McCaul Justus Hofmeyr	Graduated
Gabriele Vilyte	Masters, Clinical Epidemiology	SU	Digital devices for tuberculosis treatment adherence	Michael McCaul Anke Rohwer Tilly Fox Jimmy Volmink	Ongoing
Liezel Blaauw	Masters, Nutrition	SU	The impact of guideline recommended protein intake on mortality and length of ICU stay in critically ill adults: A systematic review	Janicke Visser Anel Schoonees	Handed in for examination in Dec 2022
Anel Schoonees	PhD	SU	Perusing the use of research evidence in mass media reporting on health by journalists and science communicators in South Africa: The PURE Media project	Taryn Young George Claassen Celeste Naude	Ongoing

Student Name	Type	Institution	Topic	Supervisor	Status
Lindie Rossouw	Masters, Clinical Epidemiology	SU	Evaluating the birth outcomes of pregnant women living with HIV attending an antenatal clinic in Cape Town, South Africa, compared to those who are not living with HIV	Moleen Dzikiti	Completed March 2023
Victoria Ndarukwa	PhD	SU	Assessment of postnatal HIV transmission over the first 9 months of life in infants born to mothers on cART: Does feeding method matter?	Moleen Dzikiti	Ongoing
Oloruntoba Babawarun	PhD	SU	A cluster randomized controlled trial assessing the effect of mobile-phone based delivery of sexual and reproductive health on willingness and uptake of long-acting reversible contraceptives among female sex workers in Oyo State, Nigeria	Moleen Dzikiti	Student stopped responding to supervisor's emails
Lindi Mathebula	PhD	SU	Assessing routine childhood vaccination acceptance, hesitancy and refusal in Cape Town metro district, Western Cape, South Africa	Moleen Dzikiti	Ongoing
Luphiwo Mduzana	PhD	SU	Towards equitable prosthetic prescription in South Africa	Moleen Dzikiti	Ongoing
Tiwonge Mitande	PhD	SU	Ethics of pragmatic cluster trials in LDCs	Carl Lombard	Ongoing
Sode Idelphonse	PhD	SU	Estimation and operational characteristics of the restricted mean survival time using a bayesian decision-theoretic framework	Carl Lombard	Stopped due to lack of progress and funding timeline
Lynn Hendricks	PhD	SU	Envisioning enabling environments for adherence to ART for young women living with perinatal HIV infections in South Africa: An arts-based new materialism perspective	Taryn Young Karin Hannes	Ongoing
Ivan Nkuhairwe	Masters, Biostatistics	SU	Estimating the causal effects of dexamethasone versus hydrocortisone on the neutrophil-lymphocyte ratio in critically ill COVID-19 patients from Tygerberg Hospital ICU using TMLE methods	Rhoderick Machekano Tonya Esterhuizen	Complete
Jafet Ilonga	Masters, Clinical Epidemiology	SU	Incidence of nosocomial infections among patients with and without Covid-19 infection admitted in the intensive care units of a referral hospital in Windhoek, Namibia: A retrospective cohort study	Tonya Esterhuizen	Complete
Unoda Chakalisa	Masters, Clinical Epidemiology	SU	Urinary sodium and potassium excretion, and their relationship with blood pressure: A cross-sectional study of people living with HIV on ART in Botswana	Tonya Esterhuizen Mospele Mospele	Complete
Jermaine Dambi	Masters, Clinical Epidemiology	SU	Reliability and validity of the Shona version of the Exercise Benefits and Barriers Scale in Zimbabwean adult people living with HIV/AIDS	Tonya Esterhuizen	Complete
Khanya Bisholo	Masters, Clinical Epidemiology	SU	Food-borne disease in a tertiary hospital in the Eastern Cape, South Africa, during the lockdown period 2020-2021	Moleen Dzikiti	Ongoing

Student Name	Type	Institution	Topic	Supervisor	Status
Dolly Munganga	Masters, Clinical Epidemiology	SU	Prevalence and factors associated with sexual abuse among children in Khayelitsha, Cape Town: A cross-sectional study	Moleen Dzikiti	Ongoing
Ts'ele Khetheng	Masters, Clinical Epidemiology	SU	Barriers and facilitators to HIV pre-exposure prophylaxis uptake among adolescent girls and young women in Leribe district Lesotho: A cross-sectional study	Moleen Dzikiti	Ongoing
Aviwe Mgibantaka	Masters, Clinical Epidemiology	SU	Survival rate and factors associated with diabetic-related lower extremity amputations between a rural and urban hospital in South Africa's Eastern Cape province	Moleen Dzikiti	Ongoing
Solange Durão	PhD	SU	Developing a standardised, core outcome set (COS) for use in primary studies assessing community-level interventions to increase access to food in low- and middle-income countries	Jimmy Volmink Scott Drimie	Ongoing
Tina S Roberts	Masters, Clinical Epidemiology	SU	Efficacy and safety of propolisfor treating recurrent aphtous stomatitis	Anel Schoonees	Completed
Preesha Premasagar	PhD	UKZN	A comparative assessment of the investigative results and major adverse cardiovascular events in South African patients presenting with non-specific chest pain: A long-term analysis	Coleen Aldous Tonya Esterhuizen	Completed
Danelo du Plessis	Masters, Clinical Epidemiology	SU	Describing the 90-day post-operative outcomes after open radical cystectomies and evaluating predictive nomograms at a South African referral centre.	Andre van der Merwe Tonya Esterhuizen	Completed

Supporting graduates to publish their research projects

Student Name	Type	Topic	Citation	Supervisor Name
Preesha Premasagar	PhD	Cardiovascular outcomes	Premasagar P, Aldous C, Esterhuizen T. Ten-year predictors of major adverse cardiovascular events in patients without angina. <i>S Afr Fam Pract.</i> 2023;65(1), a5629. https://doi.org/10.4102/safp.v65i1.5629	Coleen Aldous Tonya Esterhuizen
Preesha Premasagar	PhD	Machine learning to predict angiogram outcomes	Preesha Premasagar, Colleen Aldous, Tonya M. Esterhuizen, Byron J. Gomes, Jason William Gaskell, David L. Tabb, Comparing conventional statistical models and machine learning in a small cohort of South African cardiac patients, <i>Informatics in Medicine Unlocked</i> , Volume 34, 2022, 101103, ISSN 2352-9148, https://doi.org/10.1016/j.imu.2022.101103 .	Coleen Aldous Tonya Esterhuizen
Caro-Lee Saal	Masters, Clinical Epidemiology	Developmental outcomes in children with TBM	Saal, CL., Springer, P., Seddon, J.A. et al. Risk factors of poor developmental outcome in children with tuberculous meningitis. <i>Childs Nerv Syst</i> (2022). https://doi.org/10.1007/s00381-022-05791-2	Tonya Esterhuizen Regan Solomons

Student Name	Type	Topic	Citation	Supervisor Name
Jack Mkubwa	Masters, Clinical Epidemiology	Traumatic brain injury	Mkubwa JJ, Bedada AG, Esterhuizen TM. Traumatic brain injury: association between the Glasgow Coma Scale and the intensive care unit mortality. <i>South Afr J Crit Care</i> 2022;38(2):60-63. https://doi.org/10.7196/SAJCC.2022.v38i2.525	Tonya Esterhuizen AG Bedada
Jermaine Dambi	Masters, Clinical Epidemiology	HIV/AIDS	Dambi JM, Domingue B, Abas M, Chibanda D and Esterhuizen TM (2023) Reliability and validity of the Shona version of the Exercise Benefits and Barriers Scale in Zimbabwean adult people living with HIV/AIDS. <i>Front. Psychiatry</i> 14:1188689. doi: 10.3389/fpsyt.2023.1188689	Tonya Esterhuizen
Sandile Ndlovu	Masters, Philosophy Cancer Science	Childhood cancers	Ndlovu, S, Esterhuizen TM, Uys, R, van Zyl, A, Kruger, M. Trends in childhood cancers at Tygerberg Hospital from 1994 to 2014. (2023). <i>South African Journal of Child Health</i> , 17(2), 96-98. https://doi.org/10.719	Mariana Kruger Tonya Esterhuizen
Lynn Hendricks	Masters, Clinical Epidemiology	Adherence to ART	Hendricks, L., Eshun-Wilson, I. & Rohwer, A. A mega-aggregation framework synthesis of the barriers and facilitators to linkage, adherence to ART and retention in care among people living with HIV. <i>Syst Rev</i> 10, 54 (2021). https://doi.org/10.1186/s13643-021-01582-z	Anke Rohwer
Mary Hoffee	Masters, Medicine	Emergency Medicine	Elizabeth M, McCaul M, Hendrikse C. African Journal of Emergency Medicine Emergency clinician output in a district hospital emergency centre : a cross-sectional analysis. <i>African J Emerg Med.</i> 2022;12(3):264-269. doi:10.1016/j.afjem.2022.05.008	Supervisor: Clint Hendricks Co-author: Michael McCaul
Eyitayo Omolara Owolabi	PhD	Global Surgery	Owolabi EO, Adeloye D, Ajayi AI, McCaul M, Davies J, Chu KM (2022) Lower limb amputations among individuals living with diabetes mellitus in low- and middle-income countries: A systematic review protocol. <i>PLoS ONE</i> 17(4): e0266907. https://doi.org/10.1371/journal.pone.0266907	Supervisor: K Chu Co-author: Michael McCaul
Christoff Geldenhuys	MBChB	Clozapine-Associated Leukopenia and Agranulocytosis in Western Cape, South Africa A 3-Year Retrospective Cohort Study	Christoff Geldenhuys, Moleen Zunza, Nicki Tiffin, Liezl Koen, Eric H. Decloedt. Clozapine-Associated Leukopenia and Agranulocytosis in Western Cape, South Africa A 3-Year Retrospective Cohort Study. <i>Journal of Clinical Psychopharmacology</i> 2021; 41(3):250-254. doi: 10.1097/JCP.0000000000001394	Co-author: Moleen Dzikiti
Ottovon Bismark Dakurah	Masters, Philosophy Cancer Science	Viral hepatitis associated hepatocellular carcinoma on the African continent, the past, present, and future: a systematic review	Ottovon Bismark Dakurah, Cynthia Raissa Tchuem Tamandjou, Moleen Zunza, Wolfgang Preiser and Tongai Gibson Maponga. Viral hepatitis associated hepatocellular carcinoma on the African continent, the past, present, and future: a systematic review. <i>BMC Cancer.</i> 2021; 21:715. doi.org/10.1186/s12885-021-08426-y	Co-author: Moleen Dzikiti
Tina S Roberts	Masters, Clinical Epidemiology	Efficacy and Safety of Propolis for Treating Recurrent Aphthous Stomatitis (RAS): A Systematic Review and Meta-Analysis	Roberts T, Kallon II, Schoonees A. Efficacy and Safety of Propolis for Treating Recurrent Aphthous Stomatitis (RAS): A Systematic Review and Meta-Analysis. <i>Dent J (Basel).</i> (was published: 2024 Jan 6;12(1):13. doi: 10.3390/dj12010013.)	Co-authors: II Kallon, A Schoonees

ADDENDUM B:
INTELLECTUAL INPUT

Name	Type (Member, Chair, Editor etc)	Where (Name of Society, Group, Committee etc)	Term
Amanda Brand	Peer reviewer	Frontiers in Nutrition	2023
	Peer reviewer	BMC Infectious Diseases	2023
	Peer reviewer	PLOS One	2023
	Peer reviewer	Cochrane Database of Systematic Reviews (for Cochrane Hepato-biliary Group)	2023
	Peer reviewer	Journal of Clinical Epidemiology	2023
	Internal Examiner	Stellenbosch University, MSc Clinical Epidemiology (Kopano Dube)	2023
	Member	SA GRADE Network	2020 – ongoing
Moleen Dzikiti	Early Career Epidemiologist Representative for Africa Region	International Epidemiology Association	Sept 2021 – 2024
	Member	Stellenbosch University Human Research Ethics committee	2017 – ongoing
	Associate editor	Pilot and Feasibility Studies journal	Aug 2020 – ongoing
	External examiner for Introduction to Computing in Biostatistics module	University of the Witwatersrand, School of Public Health	2022 – 2024
	Reviewer	Journal of international AIDS society journal	2016 – ongoing
	Peer Reviewer	AIDS & Behavior journal	2019 – ongoing
	Peer Reviewer	Contemporary Clinical Trials communication journal	2017 – ongoing
	Peer Reviewer	Journal of Clinical Epidemiology	2023
	External examiner	University of Pretoria,MSc Public Health	2021 – ongoing
	External examiner	University of the Witwatersrand, MSc	2020 – ongoing
	Internal examiner	Stellenbosch University, MSc	2021 – ongoing
	External examiner	UCT, MSc	2016 – ongoing
	External examiner	UKZN, MSc	2017 – ongoing
	External examiner	UWC, MSc	2022 – ongoing
	Emerging leaders committee SU-CUGH African Global Health Hybrid Conference	Emerging leaders committee SU-CUGH African Global Health Hybrid Conference	22 – 30 Oct 2022
	Reviewer	NRF Rating	2018 – ongoing
	Program evaluator	South Africa, Council on Higher Education	2021 – ongoing
Tonya Esterhuizen	Member	Stellenbosch University Human Research Ethics committee	2017 – ongoing
Nasreen Jessani	Vice Chair	Evidence to Action Thematic Working Group, Health Systems Global	Nov 2016 – Nov 2021
	Advisory Group member	INASP, UK	Oct 2020 – ongoing
	Advisory Board member	AcademyHealth, USA: Knowledge Translation and Dissemination Advisory Committee	Jun 2013 – ongoing
	Steering Committee member	JBI, Australia: World Evidence Based Health Care day	2020 – ongoing
	Knowledge Translation and Management Expert	WHO/TDR	2019 – ongoing

Name	Type (Member, Chair, Editor etc)	Where (Name of Society, Group, Committee etc)	Term
Nasreen Jessani <i>(continued)</i>	Manuscript reviewer and editor	WHO/AHPSR	2021 – ongoing
	Associate Editor	Health Research Policy and Systems journal	Nov 2020 – ongoing
	Curriculum Design: Module 10 - "Knowledge Translation: From Research to Practice and Policy"	AfriWon Research collaborative (part of WONCA – World organisation of family doctors)	Nov 2021
	Peer reviewer	PLOS GLocal Public Health Journal	ongoing
	Peer reviewer	Evidence and Policy Journal	ongoing
	Peer reviewer	Health Policy and Planning Journal	ongoing
	Peer reviewer	International Journal of Health Planning and Management	ongoing
	Peer reviewer	Health Research Policy and Systems Journal	ongoing
	Peer reviewer	American Journal of Public Health	ongoing
Idriss Kallon	Peer reviewer	BMJ Global Health	ongoing
	Peer Reviewer	BMC Health Services Research	May 2022
Michael McCaul	Peer Reviewer	PLOS One	3 Jan 2023
	Section Editor	African Journal of Emergency Medicine	2019 – ongoing
	Peer reviewer	Journal of Clinical Epidemiology	2021 – date
	Section Editor	PLOS	2022 – date
	Peer reviewer	BMC HSR	2020 – date
	Working group member	COVID-END	2020 – date
	Committee Member	SA Adult level/EDL Committee	2020 – date
	Examiner	CPUT BSc EMC	2021 – date
	Examiner	UCT MPhil Emergency Medicine	2017 – 2021
	Examiner	UCT MPH	2017 – 2021
	Member	SA GRADE Network	2018 – date
	Member	GRADE	2020 – date
Celeste Naude	Invited speaker	National Academies of Sciences, Engineering, and Medicine (NASEM) Workshop Series: Use of Meta-Analyses in Nutrition Research and Policy	2023
	Deputy Director	Cochrane Nutrition and Physical Activity Thematic Group	2023 – ongoing
	Associate Editor	Cochrane Effective Practice and Organisation of Care	2015 – 2023
	Associate Editor	Nutrition Journal, Biomed Central	2017 – 2023
	Member	Cochrane WHO Working Group	2018 – 2023
	Co-director	Cochrane Nutrition	2016 – ongoing
	Member	Cochrane Fields Executive Committee	2016 – ongoing
	Member	Cochrane African Network	2016 – ongoing
	Member	South Africa GRADE Network	2018 – ongoing
	Advisory group member	Enabling sustainable public engagement in improving health and health equity (IHC CHOICE) project, Norwegian Institute of Public Health	2020 – ongoing
	Invited speaker	National Academies of Sciences, Engineering, and Medicine (NASEM) Workshop Series: Use of Meta-Analyses in Nutrition Research and Policy	2023

Name	Type (Member, Chair, Editor etc)	Where (Name of Society, Group, Committee etc)	Term
Celeste Naude (continued)	Deputy Director	Cochrane Nutrition and Physical Activity Thematic Group	2023 – ongoing
	Associate Editor	Cochrane Effective Practice and Organisation of Care	2015 – 2023
	Associate Editor	Nutrition Journal, Biomed Central	2017 – 2023
	Member	Cochrane WHO Working Group	2018 – 2023
	Co-director	Cochrane Nutrition	2016 – ongoing
	Member	Cochrane Fields Executive Committee	2016 – ongoing
	Member	Cochrane African Network	2016 – ongoing
	Member	South Africa GRADE Network	2018 – ongoing
	Advisory group member	Enabling sustainable public engagement in improving health and health equity (IHC CHOICE) project, Norwegian Institute of Public Health	2020 – ongoing
	Methodologist	Updating WHO guidance on indicators for the assessment of iodine status	2023 – ongoing
	Member	Nutrition Guidance Expert Advisory Group (NUGAG) Subgroup on Policy Actions; Safe, Healthy and Sustainable Diets Unit, Department of Nutrition and Food Safety, World Health Organization Guideline Development Groups	2018 – ongoing
	Observer	WHO Guidelines: Integrated management of children and adolescents in all their diversity with obesity	2023 – ongoing
Celeste Naude Michael McCaul	Member	Technical Reference Group on Healthy Eating, Western Cape Government Health	2014 – ongoing
	Member	Chronic Disease Initiative for Africa	Apr 2014 – ongoing
	Methodologist	Guideline on the prevention and treatment of wasting in infants and children, Food and Nutrition Action in Health Systems Unit, Department of Nutrition and Food Safety, World Health Organization	2020 – 2023
Anke Rohwer	Editor	Cochrane Infectious Diseases	08/2020 – ongoing
	Methods editor	Cochrane Public Health	10/2014 – 12/2021
	Lead of Teaching Methods Consultants Group	Evidence-based Research network (EVBRES)	2018 – 2023
	Peer reviewer	African Journal of Emergency Medicine	03/2021
Anel Schoonees	Steering Group Committee member	Cochrane Africa	2017 – ongoing
Susan van Wyk	Peer reviewer	Cochrane DTA reviews	2021 – ongoing
	Peer reviewer	Cochrane infectious diseases	2022 – ongoing
	Peer reviewer	The Lancet Healthy Longevity	June 2022
	Peer reviewer	PLOS Global Public Health	Nov 2022
	Peer reviewer	BMC journals	2023 – ongoing
	Examiner	Stellenbosch University MSc Clinical Epidemiology	2022
	Examiner	Wits University, MSc in Epidemiology	2023
Marianne Visser	Internal examiner	Stellenbosch University M Nutrition (Liezl Blaauw)	2023
	Peer reviewer	Nutrition Reviews	2023
	Peer reviewer	PLOS One	2023

FUNDING

The research, other outputs and activities of the CEBHC are made possible through funding received from various organisations.



The CEBHC does not receive any funding from commercial sources, defined as any for-profit manufacturer or provider of health care, or any other for-profit source with a real or potential vested interest in the findings of specific research. We align with the FMHS and University intent to not accept any form of support, financial or otherwise, from the tobacco industry or its proxies, nor engage with any institution, organisation or foundation, where its income is directly derived from the production of harmful tobacco products (whether for smoking or other activities), or the promotion of said harmful products.

Contact Us

Tel: +27 21 938-9886
Email: tyoung@sun.ac.za or tracin@sun.ac.za
Website: www.cebhc.co.za
Facebook: www.facebook.com/cebhc
Twitter: [@cebhc](https://twitter.com/cebhc)

Centre for Evidence-based Health Care (CEBHC)
Division of Epidemiology and Biostatistics
Department of Global Health
Faculty of Medicine and Health Sciences
Stellenbosch University
PO Box 241, Cape Town, 8000
South Africa