

● Centre for
● Evidence
● Based
● Health
● Care



Stellenbosch

UNIVERSITY
IYUNIVESITHI
UNIVERSITEIT

**MEDICINE AND
HEALTH SCIENCES**

CENTRE FOR EVIDENCE-BASED HEALTH CARE



Contents

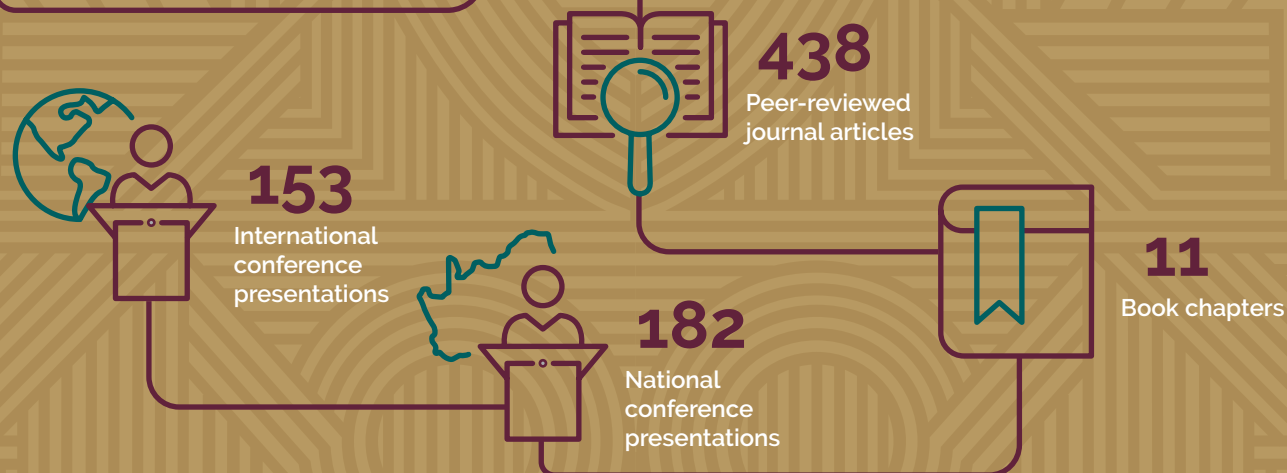
CELEBRATING 10 YEARS	02
Reflecting on the achievements of the Centre 2011–2021	03
OUR CENTRE	04
Guiding Principles	05
Our vision	05
Our mission	05
Values	05
Strategic objectives	06
Governance	07
Advisory Committee	07
Management Committee	07
Partnerships	08
Local and international stakeholders	09
The CEBHC Team	10
ANNUAL ACTIVITIES	12
How we performed in 2021	13
PURE Media project	13
CEBHC staff share some perspectives on their role as WHO Guideline Methodologists	14
Cochrane Africa launched three new centres	15
Evidence generation, synthesis and translation during the COVID-19 pandemic	15
ADDENDA	16
Peer Reviewed Publications	17
Research outputs	17
International and national presentations	19
Postgraduate student supervision	20
Supporting graduates to publish their research projects	22
Intellectual Input	24
Teaching Sessions	27
Sessions facilitated for undergraduate programmes	27
Sessions facilitated for postgraduate programmes	27
FUNDING	28

CELEBRATING 10 years



The launch of the CEBHC on 22 August 2011 was well-attended by key stakeholders from Stellenbosch University, as well as local and national collaborators. Pictured from left: Prof J Volmink, Mr T Botha, Prof R Botman, Dr T Young

2011–2021 in numbers



Reflecting on the achievements of the Centre 2011–2021

On 22 August 2011 an official launch of the Centre for Evidence-based Health Care (CEBHC) was held with the first annual EBHC Symposium. Ten years later and we have so much to reflect on, be thankful for, and to celebrate...

Over the last decade the CEBHC has made great strides in the field of evidence-based healthcare and we are recognised by others for our leadership in evidence synthesis, teaching and knowledge translation.

• Impacting guidelines and policies:

The work of the CEBHC has impacted policies and practices on various fronts, and we are recognized by others for our leadership in knowledge translation. For example, READ-It has contributed to the following over the past 3 years – helped with 12 global guidelines, assisted with 6 national guidelines, influenced national decision-making and contributed to methods that contribute to improved review quality, efficiency or uptake.

• Contributions to research outputs:

Since inception we have published 438 peer-reviewed journal articles, 11 book chapters, and gave 153 international and 182 national conference presentations.

• Leadership in evidence synthesis:

We contribute to Cochrane on many fronts: we co-lead Cochrane Nutrition and the Southern-Eastern Hub of Cochrane Africa, we are steering group members of Cochrane Africa and members of Cochrane Knowledge Translation and Cochrane WHO strategic groups, we serve as Cochrane editors, and are lead- and co-authors of numerous Cochrane reviews. We also co-lead the South African GRADE Network.

• Agile response to the COVID-19 pandemic:

We responded in many different ways: new research to inform the COVID-19 response, promoting the use of research evidence, media responses, case and contact tracing, developing and driving practice guidance, modifications and enhancements to teaching and learning to continue our academic offering, ongoing mentorship and support for postgraduate research.

• Paying it forward:

Staff supervise and provide methodological mentorship and support to various postgraduates, including postdoctoral students. Beyond graduation, dedicated support is provided for graduates to publish their research. Staff also serve as peer-reviewers and editors for various journals, as guideline methodologists and are members of various advisory committees.

• Securing grants:

We secured various new grants to support our programme of work.

• Living out our values:

The intellectual labour of the CEBHC is grounded in its values of excellence, integrity, credibility, relevance and collaboration. Our dedicated team make time to reflect, learn and grow together, and nurture a culture that supports work-life balance. This type of teamwork contributes to an enabling environment for staff to live the values of the Centre.

• Advancing EBHC knowledge, skills, practices:

We provide input to under- and postgraduate programmes and we implemented various workshops and seminars to advance EBHC knowledge and skills. The CEBHC has led and contributed to research on how best to facilitate teaching and learning of EBHC. For a decade we have been involved in concurrently facilitating teaching and learning of EBHC in various undergraduate programmes offered by the Faculty. This includes co-leading the planning of the integration of EBHC learning in the renewed MBChB curriculum with the Undergraduate Research Office. Furthermore, we developed and implemented a series of workshops to increase capacity of researchers on the art and science of knowledge translation, and developed and offered various other in-person and online workshops across Africa (for example, the Primer in systematic reviews, Evidence-based Public Health, Research Integrity, Network meta-analysis, etc.).



Guiding Principles

The CEBHC is a coordinating and directive centre for research and training in the field of evidence-based health care. We are located within the Department of Global Health at the Faculty of Medicine and Health Sciences, Stellenbosch University.

OUR VISION

A world where every member of society receives equitable and quality health care supported through evidence-informed decision-making.

OUR MISSION

To be a Centre of Excellence in Africa in evidence synthesis and knowledge translation in health, through innovation, collaboration and distinction in research.

STRATEGIC PRIORITIES



RESEARCH



TRAINING



KNOWLEDGE
TRANSLATION



OUR CENTRE

Guiding Principles

05

Governance

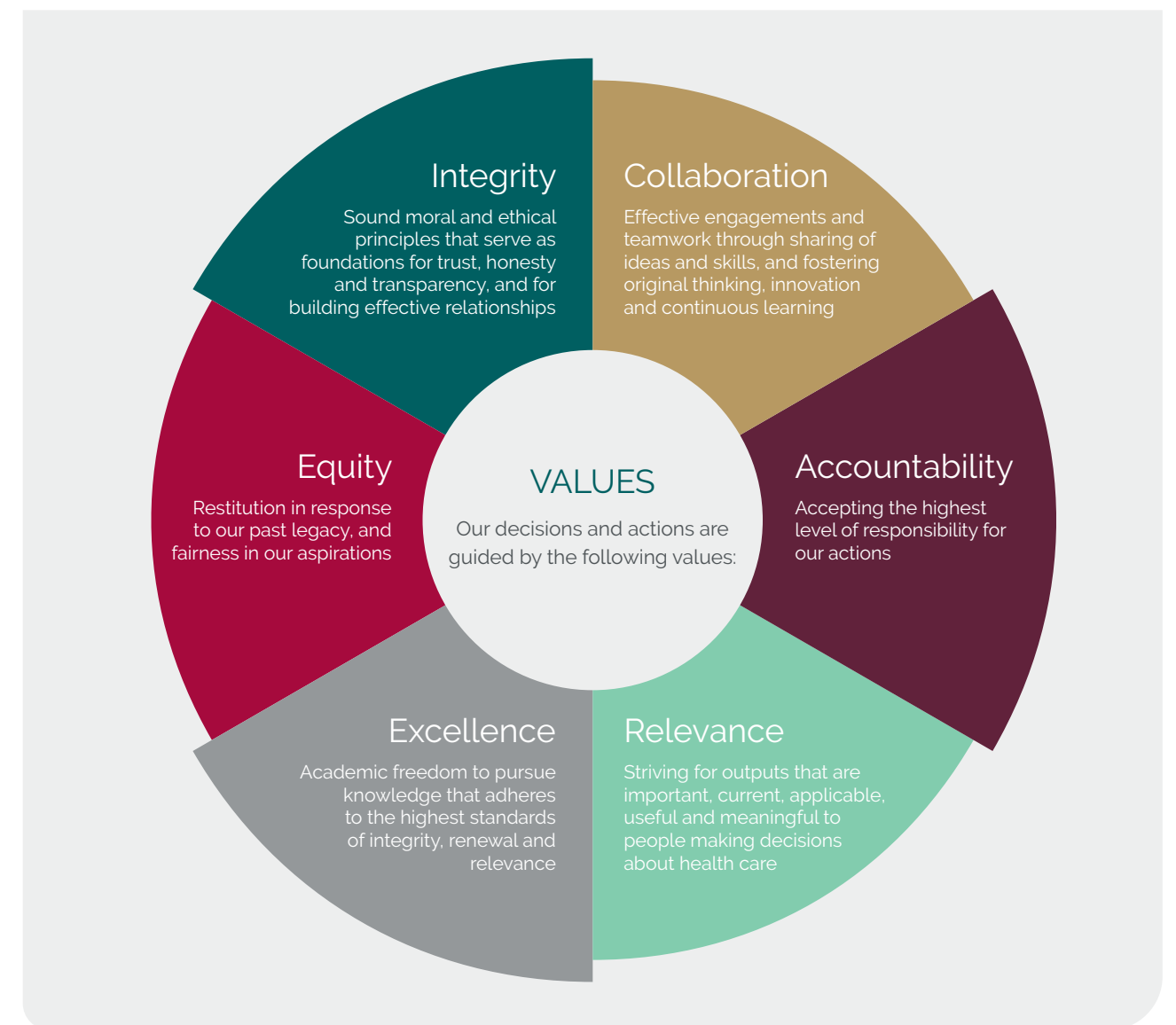
07

Partnerships

08

The CEBHC team

10



Integrity

Sound moral and ethical principles that serve as foundations for trust, honesty and transparency, and for building effective relationships

Collaboration

Effective engagements and teamwork through sharing of ideas and skills, and fostering original thinking, innovation and continuous learning

Accountability

Accepting the highest level of responsibility for our actions

Relevance

Striving for outputs that are important, current, applicable, useful and meaningful to people making decisions about health care

Excellence

Academic freedom to pursue knowledge that adheres to the highest standards of integrity, renewal and relevance

Equity

Restitution in response to our past legacy, and fairness in our aspirations

VALUES

Our decisions and actions are guided by the following values:



STRATEGIC OBJECTIVES

We use multipronged strategies to increase uptake of evidence into policy and practice:

-  **1** Address policy and practice needs in South Africa and Africa, and enhance the use of best available evidence
-  **2** Make timely contributions to knowledge gaps in health care by carrying out and promoting systematic reviews that are Africa-relevant and rigorous
-  **3** Enhance knowledge, skills and practices of key stakeholders in evidence-informed health care
-  **4** Cultivate diverse, strong and effective partnerships
-  **5** Foster a professional environment that is collaborative, intellectually stimulating and sustainable



Governance

The work of the CEBHC is guided by the Constitution of the Centre. The Centre is managed by a Director and her Management Committee, while oversight is provided by an Advisory Committee.

ADVISORY COMMITTEE



Prof Taryn Young
CEBHC DIRECTOR



Prof Jimmy Volmink
DEAN, FACULTY OF
MEDICINE AND HEALTH
SCIENCES



Dr Therese Fish
VICE-DEAN, CLINICAL
SERVICES AND
SOCIAL IMPACT



Prof Angela Dramowski
DEPARTMENT OF
PAEDIATRICS



Dr Tania Brodovsky
RESEARCH CAPACITY
DEVELOPMENT
AND FUNDING



Dr Rose Oronje
THE AFRICAN INSTITUTE
FOR DEVELOPMENT
POLICY (AFIDEP)



Dr Marina Joubert
CENTRE FOR RESEARCH
ON SCIENCE AND
TECHNOLOGY (CREST)



Dr Keith Cloete
PROVINCIAL
DEPARTMENT OF HEALTH



Ms Sandhya Singh
NATIONAL DEPARTMENT
OF HEALTH



Prof Paul Garner
LIVERPOOL SCHOOL OF
TROPICAL MEDICINE

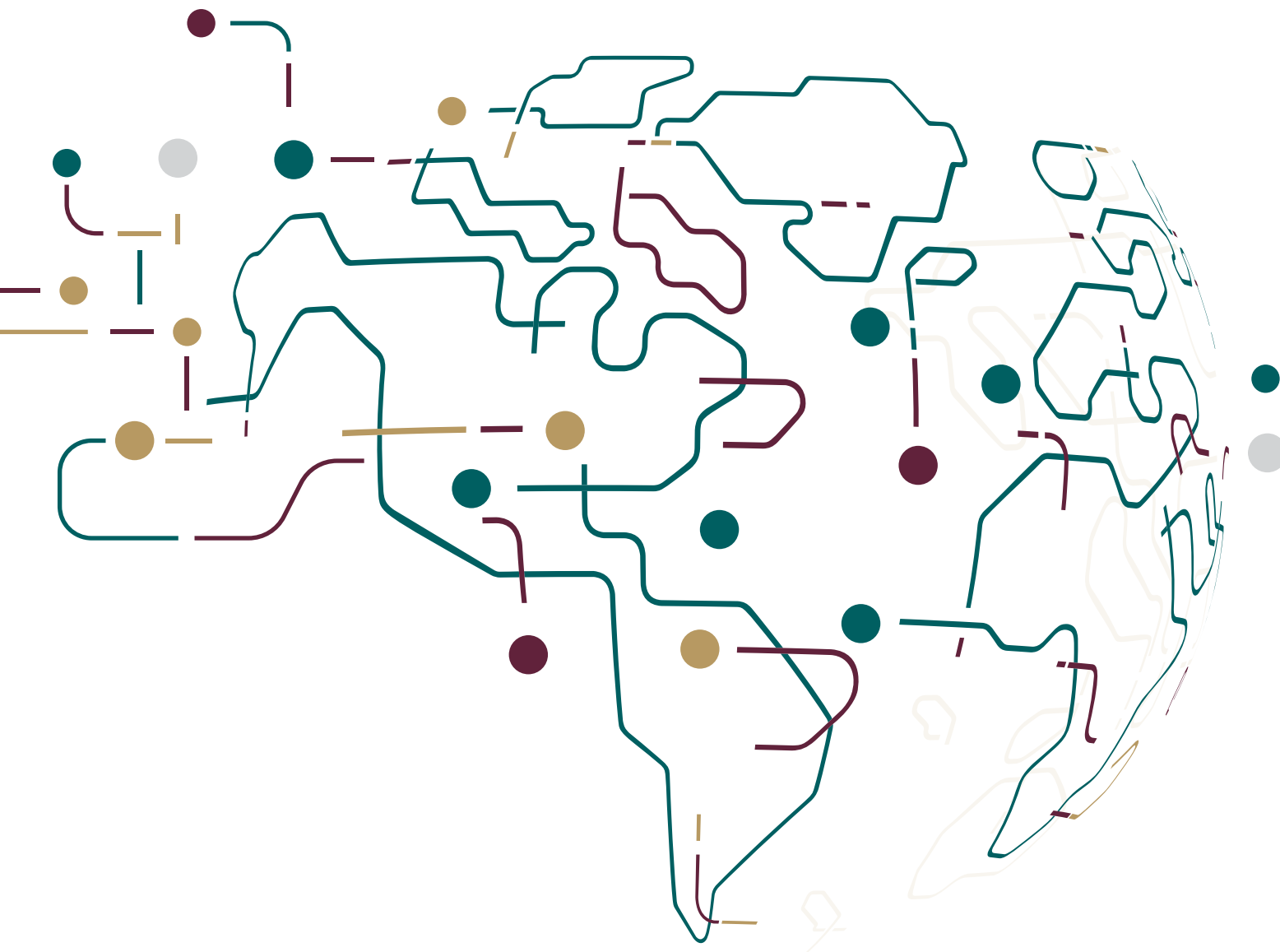
MANAGEMENT COMMITTEE

The Management Committee, consisting of the Director, head of the Department of Global Health and two to three staff members, meets regularly to discuss management issues. Specific individuals are co-opted when necessary, based on the agenda of the specific Management Committee meeting.

Partnerships

The Centre works in collaboration with a number of local, regional and international institutions, and staff serve on various national and international committees. The key principles are to encourage dialogue, enhance EBHC activities and avoid unnecessary duplication.

- Regionally we link with **CEBHA+**, and within the **Cochrane African Network** the CEBHC plays a key role in coordinating the Southern-Eastern Hub.
- Internationally the Centre collaborates with the **READ-It project** (funded by DFID), with partners in India, Sri Lanka, Norway, UK and Zambia, to increase evidence-informed decisions in order to improve health and health care for people living in poverty in LMICs.
- The CEBHC also works with various **Cochrane and Campbell groups** and actively links with the **World Health Organisation (WHO)** at national, regional and international levels.
- We link with the **COVID-19 Evidence Network** (COVID-END) to support COVID-19 related decision-making. COVID-END is a time-sensitive network that brings together more than 50 groups working in evidence synthesis, technology assessment and guideline development from around the world. The objective is to share and minimize duplication. <https://www.mcmasterforum.org/networks/covid-end>
- We have formal MoUs with **Cochrane SA** at the SA Medical Research Council, the **Centre for Evidence-based Practice (CEBaP)** at the Belgian Red Cross, **Kenya Medical Research Institute (KEMRI)**, and the **National Department of Health** linked to the SA GRADE Network.



LOCAL AND INTERNATIONAL STAKEHOLDERS

PROVINCIAL



NATIONAL



REGIONAL



INTERNATIONAL





The CEBHC Team

The work of the CEBHC is supported by an excellent team of full-time and part-time staff as well as external staff appointed as extra-ordinary staff.



Prof Taryn Young
DIRECTOR



Prof Celeste Naude
ASSOCIATE PROFESSOR



Prof Peter Nyasulu
ASSOCIATE PROFESSOR



Prof Tonya Esterhuizen
ASSOCIATE PROFESSOR



Dr Jeannine Uwimana-Nicol
SENIOR RESEARCHER



Dr Susan van Wyk
RESEARCHER



Dr Jody Boffa
RESEARCHER



Dr Merga Feyasa
BIostatistician



Prof Rhoderick Machekano
ASSOCIATE PROFESSOR



Prof Eleanor Ochodo
ASSOCIATE PROFESSOR



Prof Carl Lombard
SENIOR BIostatistician



Dr Anke Rohwer
SENIOR RESEARCHER



Dr Idriss Ibrahim Kallon
POSTDOC



Dr Desmond Kuupiel
POSTDOC



Ms Traci Naidoo
PROJECT MANAGER



Ms Liesel Floor
PROJECT MANAGER



Dr Marianne Visser
SENIOR RESEARCHER



Dr Nasreen Jessani
SENIOR RESEARCHER



Dr Michael McCaul
SENIOR LECTURER



Ms Anel Schoonees
SENIOR LECTURER



Ms Sandra Josias
ADMINISTRATIVE OFFICER



Ms Anthea Henry
ADMINISTRATOR



Ms Lee-Ann Human
RECEPTIONIST



Ms Lynn Hendricks
SENIOR RESEARCHER



Dr Amanda Brand
SENIOR RESEARCHER



Dr Moleen Dzikiti
SENIOR RESEARCHER



How we performed in 2021	13
PURE Media project	13
CEBHC staff share some perspectives on their role as WHO Guideline Methodologists	14
Cochrane Africa launched three new centres	15
Evidence generation, synthesis and translation during the COVID-19 pandemic	15

How we performed in 2021

We published

32
Peer-reviewed journal articles

1
Book chapter

We presented

3
National conference presentations

17
International conference presentations

We supervised and provided methodological mentorship and support to

25
Masters students

13
PhD students

1
Postdoctoral research fellow

PURE Media project

For many South Africans, mass media is the only vehicle to science. Health is a popular science topic in mass media because everyone, sooner or later, out of necessity or passion, has an interest in health.

Journalists and science communicators in South Africa are important intermediaries in communicating health science to the public. They contribute – whether it is intentionally or not – to the knowledge, perceptions, and attitudes of the public towards health science. Mass media reports containing unsound, inaccurate, misleading or contradictory information can do more harm than good, especially in vulnerable groups such as those suffering from ill-health, and people with low income or limited formal education.

The onus cannot be on the public alone to identify poor health science communication. Ideally, the information reaching the public should be the product of good knowledge translation informed by the best existing health research.

Anel Schoonees from the CEBHC is doing her PhD in Public Health, investigating the quality of health intervention research reporting in mass media in South Africa, and identifying what actions are needed to improve problem areas. Her supervisors are Professors Taryn Young, George Claassen and Celeste Naude. The project is funded by the NRF and Harry Crossley.



Ms Anel Schoonees

CEBHC staff share some perspectives on their role as WHO Guideline Methodologists

The United Nations (UN) Agencies working on the prevention of child wasting recently developed the Framework for the Global Action Plan (GAP) on Child Wasting. One essential component of the GAP for wasting is to update and develop wasting guidelines and tools to support governments on the prevention and treatment of child wasting in all contexts.

The World Health Organization (WHO) is currently working with other UN agencies and key stakeholders to update and develop a global guideline on the prevention and treatment of child wasting, with the potential to impact actions aimed at reducing wasting in the more than 45 million children under five years of age worldwide (6.7% of all children) who suffer from wasting.

The WHO guideline development process uses the GRADE (Grading of Recommendations, Assessment, Development and Evaluation) approach to assess the certainty of a body of evidence, and to develop and formulate recommendations. Prof Celeste Naude and Dr Michael McCaul from the CEBHC are supporting the development of this guideline as methodologists, complementing the technical expertise of the subject-matter experts. Their involvement started in December 2020 and Celeste and Michael are gaining valuable hands-on experience in being methodologists. Explains Michael:

"In this role we are advising the WHO guideline steering committee, supporting the technical and systematic review teams, and facilitating the review of the evidence by the guideline development group to make recommendations via the GRADE Evidence to Decision (EtD) Framework."

This particular WHO guideline has a comprehensive scope covering more than 16 recommendations, and including intervention, prevention, diagnostic and prognostic questions. Celeste adds that "this scope and diversity has demanded our active involvement, substantial methodological inputs and a significant time-commitment from us throughout the process, including navigating various challenges and novel territory, such as the application of methods to include prognostic evidence in recommendations about interventions".

Celeste and Michael have described their experience thus far as an opportunity for rich and real-time experiential learning, which is "intensely rewarding but can simultaneously be very challenging at times". Positive aspects of this role include learning to work well together, and building on each other's strengths, understanding perspectives to problem-solve in order to fulfil their responsibilities in the guideline development process. Some challenges have been specific methodological synthesis challenges, as well as the need to balance other deliverables and projects. The numerous online guideline



Prof Celeste Naude



Dr Michael McCaul

development group meetings will kick-off in 2022 and Celeste and Michael will serve as Methods Chairs for these meetings, with plans for a possible face-to-face guideline development group meeting in Geneva later in the year.

WHAT IS CHILD WASTING?

Child wasting refers to a child who is too thin for his or her height and is the result of recent rapid weight loss or the failure to gain weight. A child who is moderately or severely wasted has an increased risk of death, but treatment is possible.



Cochrane Africa launched three new centres

As members of Cochrane Africa we celebrated the launch of:

- **Cochrane Cameroon** in June 2021 as a geographical affiliate of Cochrane and is also part of Cochrane Africa. <https://cameroon.cochrane.org/>
- **Cochrane Kenya** in June 2021 as a geographical affiliate of Cochrane and is also part of Cochrane Africa. <https://kenya.cochrane.org/>
- **Cochrane Nigeria** in July 2021 as a full Cochrane Centre and launched as part of the 4th Cochrane Africa Indaba. <https://nigeria.cochrane.org/>



Evidence generation, synthesis and translation during the COVID-19 pandemic

There continues to be a need for reliable appraisal and synthesis of research evidence assembled rapidly for policy and practice. The methods and evidence to policy procedures that this programme of work has helped develop (and continues to) over many years has been central to WHO and some country-level government responses.

From March 2020, READ-It staff and contributors pivoted to COVID-19 global and national priorities and this continued through to 2021. In guideline development within COVID-19, READ-It has helped governments and agencies conduct systematic reviews and provided guidance to facilitate evidence-informed decisions. In South Africa, the National Department of Health is linking to the SA GRADE Network, run by CEBHC and Cochrane South Africa (CSA), to get priority reviews done. We continued to conduct rapid reviews directly informing national treatment guidelines. Using multiplier funding from the German Ministry of Education and Research (BMBF) through the CEBHA+ project, we collaborated under the umbrella of the SA GRADE Network. Team members of the CEBHC engaged with national and provincial policymakers to discuss evidence gaps related to COVID-19 and conducted ten rapid reviews in response to the needs identified. The reviews have informed national COVID-19 guidelines, while other dissemination products to communicate findings to a wider audience have been developed. Rapid reviews are being indexed and can be found on Epistemonikos (<https://www.epistemonikos.org/>). The effect of the reviews and engagement with policy makers is currently being evaluated.

RAPID REVIEWS PREPARED BY SA GRADE NETWORK

- Rapid review of Molnupiravir for COVID-19
- Rapid review of Baricitinib for COVID-19
- Rapid review of Colchicine for COVID-19
- Rapid review of NSAIDs for COVID-19
- Rapid review of Fluvoxamine for COVID-19
- Rapid review of Doxycycline for COVID-19
- Rapid review of Rivaroxaban for COVID-19
- Inhaled Corticosteroids for COVID-19
- Vitamin C for COVID-19
- Tocilizumab for COVID-19 Update
- Convalescent plasma for COVID-19 Update
- Azithromycin for COVID-19 Update
- Interferon for COVID-19 Update
- Tocilizumab for COVID-19 Update
- Chloroquine-Hydroxychloroquine for COVID-19
- Colchicine for COVID-19 Update
- Ivermectin for Prophylaxis of COVID-19
- Ivermectin for COVID-19

The reviews have informed national COVID-19 guidelines (<https://www.knowledgehub.org.za/content/covid-19>)



Research Outputs

PEER REVIEWED PUBLICATIONS

1. **McCaul, M., Young, T., Clarke, M.** Strengthening prehospital clinical practice guideline development in South Africa: Reflections from guideline experts. *Afr J Emerg Med.* 2021 Mar;11(1):132-139. Epub 2020 Oct 29. PMID: 33680734; PMCID: PMC7910183.
2. Pfadenhauer, L.M., Grath, T., Delobelle, P., **Jessani, N.**, Meerpohl, J.J., **Rohwer, A.**, Schmidt, B.M., Toews, I., Akiteng, A.R., Chapotera, G., Kredo, T., Levitt, N., Ntawuyirushintege, S., Sell, K., Rehfuess, E. Mixed method evaluation of the CEBHA+ integrated knowledge translation approach: a protocol. *Health Res Policy Sys* 19, 7 (2021).
3. **Hendricks, L., Eshun-Wilson, I., Rohwer, A.** A mega-aggregation framework synthesis of the barriers and facilitators to linkage, adherence to ART and retention in care among people living with HIV. *Syst Rev* 10, 54 (2021).
4. Katoto, P.D.M.C., **Brand, A.S.**, Bakan, B., et al. Acute and chronic exposure to air pollution in relation with incidence, prevalence, severity and mortality of COVID-19: a rapid systematic review. *Environ Health* 20, 41 (2021).
5. Crowley, T., **Rohwer, A.** Self-management interventions for adolescents living with HIV: a systematic review. *BMC Infect Dis* 21, 431 (2021).
6. **Jessani, N.S., Rohwer, A.**, Schmidt, B.M., et al. Integrated knowledge translation to advance noncommunicable disease policy and practice in South Africa: application of the Exploration, Preparation, Implementation, and Sustainment (EPIS) framework. *Health Res Policy Sys* 1 May 17;19(1):82.
7. Ninimiya, S.Y., Ansu-Mensah, M., Bawontuo, V., **Kuupiel, D.** Mapping evidence on ovarian, endometrial, vaginal, and vulva cancer research in Africa: a scoping review protocol. *Syst Rev.* 2021;10(1):108. Published 2021 Apr 14.
8. Bawontuo, V., Adomah-Afari, A., Amoah, W.W., **Kuupiel, D.**, Agyepong, I.A. Rural healthcare providers coping with clinical care delivery challenges: lessons from three health centres in Ghana. *BMC Fam Pract.* 2021;22(1):32. Published 2021 Feb 5.
9. **Okwundu, C.I.**, Saini, S.S. Noninvasive methods for bilirubin measurements in newborns: A report. *Semin Perinatol.* 2021 Feb;45(1):151355. doi: 10.1016/j.semperi.2020.151355. Epub 2020 Dec 1. PMID: 33317823.
10. Ansu-Mensah, M., Danquah, F.I., Bawontuo, V., Ansu-Mensah, P., Mohammed, T., Udoh, R.H., **Kuupiel, D.** Quality of care in the free maternal healthcare era in sub-Saharan Africa: a scoping review of providers' and managers' perceptions. *BMC Pregnancy Childbirth.* 2021;21(1):220-.
11. Kalideen, L., Govender, P., van Wyk, J.M., **Kuupiel, D.** Mapping evidence on standards and quality of care for older persons in long-term care facilities: a scoping review protocol. *Systematic reviews.* 2021;10(1):153-.
12. Van Wyk, A.C., de Jager, L.J., Razack, R., **van Wyk, S.S.**, Kleinhans, W., Simonds, H.M., Schubert, P.T. The initial impact of the COVID-19 pandemic on the diagnosis of new cancers at a large pathology laboratory in the public health sector, Western Cape Province, South Africa. *S Afr Med J* 2021;111(6):570-4.
13. Vonasek, B., Ness, T., Takwoingi, Y., Kay, A.W., **van Wyk, S.S.**, Ouellette, L., Marais, B.J., Steingart, K.R., Mandalakas, A.M. Screening tests for active pulmonary tuberculosis in children. *Cochrane Database of Systematic Reviews* 2021, Issue 6. Art. No.: CD013693.
14. **Rohwer, A., Uwimana Nicol, J.**, Toews, I., **Young, T.**, Bavuma, C.M., Meerpohl, J. Effects of integrated models of care for diabetes and hypertension in low-income and middle-income countries: a systematic review and meta-analysis. *BMJ Open* 2021;11:e043705.
15. Rodriguez, D.C., **Jessani, N.S.**, Zunt, J., Ardila-Gómez, S., Muwanguzi, P.A., Atanga, S.N., Sunguya, B., Farquhar, C., Nasuuna, E. Experiential Learning and Mentorship in Global Health Leadership Programs: Capturing Lessons from Across the Globe. *Annals of Global Health.* 2021; 87(1): 61, 1-18.
16. Bala, M.M., Poklepović Peričić, T., Zajac, J., **Rohwer, A.**, Klugarova, J., Välimäki, M., Lantta, D. T., Pingani, L., Klugar, M., **Clarke, M., Young, T.** (2021) What are the effects of teaching Evidence-Based Health Care (EBHC) at different levels of health professions education? An updated overview of systematic reviews. *PLoS ONE* 16(7): e0254191.
17. Wilkinson, M., Hofman, K., **Young, T.**, Schmidt, B., Kredo, T. Health economic evidence in clinical guidelines in South Africa: a mixed-methods study. *BMC Health Serv Res* 21, 738 (2021).
18. **Ochodo, E.A.**, Guleid, F., Deeks, J.J., Mallett, S. Point-of-care tests detecting HIV nucleic acids for diagnosis



Research Outputs	17
Intellectual Input	24
Teaching sessions	27

of HIV1 or HIV2 infection in infants and children aged 18 months or less. *Cochrane Database of Systematic Reviews* 2021, Issue 8. Art. No.: CD013207.

19. **Mbuagbaw, L., Schoonees, A.**, Oliver, J., Arikpo, D., Durão, S., Effa, E., Hohlfeld, A., Kredo, T., Wiysonge, C.S., **Young, T.** Publication practices of sub-Saharan African Cochrane authors: a bibliometric study. *BMJ Open* 2021;11:e051839.

20. Engel, N., **Ochodo, E.A.**, Karanja, P.W., Schmidt, B.M., Janssen, R., Steingart, K.R., Oliver, S. Rapid molecular tests for tuberculosis and tuberculosis drug resistance: provider and recipient views. *Cochrane Database of Systematic Reviews* 2021, Issue 9. Art. No.: CD014877.

21. Verbakel, J.Y., De Rop, L., Stegeman, I., Holtman, G.A., **Ochodo, E.A.**, Yang, B., Guleid, F., Davenport, C., Deeks, J.J., Dinnes, J., Dittrich, S., Emperador, D., Hooft, L., Spijker, R., Van den Bruel, A., Wang, J., Takwoingi, Y., Langendam, M.W., Leeflang, M.M.G. Accuracy of routine laboratory tests to predict mortality and deterioration to severe or critical COVID19 in people with SARSCoV2. *Cochrane Database of Systematic Reviews* 2021, Issue 9. Art. No.: CD015050.

22. Niyibizi, J.B., Nganabashaka, J.P., Ntawuyirushintege, S., Tumusiime, D., Umwali, G., Rulisa, S., Nyandwi, A., Okop, K.J., Ntaganda, E., Sell, K., Levitt, N., **Jessani, N.S.**, Bavuma, C.M. (2021) Using Citizen Science Within an Integrated Knowledge Translation (IKT) Approach to Explore Cardiovascular Disease Risk Perception in Rwanda. *Front. Trop. Dis.* 2:752357.

23. **Rohwer, A., Hendricks, L.**, Oliver, S., Garner, P. (2021) Testing for saturation in qualitative evidence syntheses: An update of HIV adherence in Africa. *PLoS ONE* 16(10): e0258352.

24. Laurenzi, C.A., du Toit, S., Ameyan, W., Melendez-Torres, G.J., Kara, T., **Brand, A.**, Chideya, Y., Abrahams, N., Bradshaw, M., Page, D.T., Ford, N., Sam-Agudu, N.A., Mark, D., Vitoria, M., Penazzato, M., Willis, N., Armstrong, A., Skeen, S. Psychosocial interventions for improving engagement in care and health and behavioural outcomes for adolescents and young people living with HIV: a systematic review and meta-analysis. *J Int AIDS Soc.* 2021 Aug;24(8):e25741. doi: 10.1002/jia2.25741.

25. Zifodya, J.S., Kreniske, J.S., Schiller, I., Kohli, M., Dendukuri, N., Schumacher, S.G., **Ochodo, E.A.**, Haraka, F., Zwerling, A.A., Pai, M., Steingart, K.R., Horne, D.J. Xpert Ultra versus Xpert MTB/RIF for pulmonary tuberculosis and rifampicin resistance in adults with presumptive pulmonary tuberculosis. *Cochrane Database Syst Rev.* 2021 Feb 22;2:CD009593.

26. **Kallon, I.I.**, Swartz, A., Colvin, C.J., MacGregor, H., Zwama, G., Voce, A.S., Grant, A.D., Kielmann, K. Organisational Culture and Mask-Wearing Practices for Tuberculosis Infection Prevention and Control among Health Care Workers in Primary Care Facilities in the Western Cape, South Africa: A Qualitative Study. *Int. J. Environ. Res. Public Health* 2021, 18, 12133.

27. **McCaul, M.**, Durao, S., Kredo, T., Garner, P., **Young, T., Rohwer, A.** Evidence synthesis workshops: moving from face-to-face to online learning. *BMJ Evid Based Med.* 2021 Oct;26(5):255-260.

28. **Uwimana Nicol, J., Hendricks, L., Young, T.** Population-level interventions targeting risk factors of diabetes and hypertension in South Africa: a document review. *BMC Public Health* 21, 2283 (2021).

29. Medley, N., Taylor, M., **Wyk, S.S.**, Oliver, S. Community views on active case finding for tuberculosis in low and middleincome countries: a qualitative evidence synthesis. *Cochrane Database of Systematic Reviews* 2021, Issue 3. Art. No.: CD014756.

30. Weeratunga, P., Bancone, G., **Ochodo, E.A.**, Pant, S., Thapa, J., Chaplin, M. Glucose6phosphate dehydrogenase deficiency nearpatient tests for tafenoquine or primaquine use with Plasmodium vivax malaria. *Cochrane Database of Systematic Reviews* 2021, Issue 1. Art. No.: CD013861.

31. Spies, R., Potter, M., Hollamby, R., van der Walt, S., Hohlfeld, A., **Ochodo, E.**, van Zyl-Smit, R.N. Sputum colour as a marker for bacteria in acute exacerbations of COPD: protocol for a systematic review and meta-analysis. *Syst Rev.* 2021 Jul 27;10(1):211.

32. **Rohwer, A.**, Taylor, M., Ryan, R., Garner, P., Oliver, S. 2021: Enhancing Public Health Systematic Reviews With Diagram Visualization. *American Journal of Public Health* 111, 1029_1034.

INTERNATIONAL AND NATIONAL PRESENTATIONS

PRESENTER	TITLE OF PRESENTATION	NAME OF CONFERENCE/EVENT	DATE	TYPE
Hendricks, L.	The Impact of Faith-Based Organizations on maternal and child health care outcomes in Africa: taking stock of the evidence.	Consortium of Universities for Global Health 12th Annual Global Health Conference	03/2021	E-poster
Hendricks, L.	When duty calls. Co-creating a bohemian rhapsody of collaborative practices.	17th International Congress of Qualitative Inquiry, University of Illinois at Urbana-Champaign,	05/2021	Oral Presentation
Hendricks, L.	'Differing' as a guiding principle in approaching researcher assessment.	17th International Congress of Qualitative Inquiry, University of Illinois at Urbana-Champaign,	05/2021	Oral Presentation
Jessani, N.	Power in Proximity: For greater participation of local researchers in development policy debates	Partnership for Economic Policy (PEP)	06/2021	Panelist
Kallon, I.I.	Publication Practices of Cochrane Authors in sub-Saharan Africa	Cochrane Indaba 2021	07/2021	Poster and oral presentation
McCaul, M.M., Naude, C.E.	Developing Clinical Practice Guidelines	Cochrane Indaba 2021	07/2021	Workshop
Hendricks, L.	Pregnancy, birth, and COVID-19: The medical researcher as patient - a photo story	Stellenbosch University Annual Academic Day.	08/2021	E-Poster
Jessani, N.	Systematic Integrated Knowledge Translation versus ad hoc engagement in Non-Communicable Diseases research: case vignettes from a research collaboration in Sub-Saharan Africa.	Stellenbosch University Annual Academic Day.	08/2021	Poster
Dzikiti, M.	Is the method of longitudinal data analysis equally relevant for common versus uncommon endpoints?	World Congress of epidemiology	09/2021	Oral presentation
Dzikiti, M.	Trial design and statistical considerations for a trial comparing group and individual treatments	World Congress of epidemiology	09/2021	Workshop: Oral presentation
Naude, C.E.	Effects of total fat intake on bodyweight in children: a Cochrane systematic review	International Congress of Dietetics	09/2021	Oral, pre-recorded
Schoonees, A.	Ready-to-use therapeutic food (RUTF) for home-based nutritional rehabilitation of severe acute malnutrition in children from six months to five years of age: a Cochrane review	International Congress of Dietetics	09/2021	Oral, pre-recorded
Hendricks, L.	Going against the grain: Academic response to government needs for rapid evidence for decision making during the C19 pandemic	World Evidence-Based Health Care Day. Joanna Briggs Institute Australia.	10/2021	Webinar
Hendricks, L.	Hovering at 25%: the infodemic surrounding South Africa's challenges with the Covid-19 Vaccination.	World Evidence-Based Health Care Day. Joanna Briggs Institute Australia.	10/2021	Fireside chat webinar and panel.
Jessani, N.	Political Economy of Evidence-based Development	GDN/Campbell Collaborative Summit: Evidence for Development What Works Global Summit	10/2021	Panel

INTERNATIONAL AND NATIONAL PRESENTATIONS *Continued*

PRESENTER	TITLE OF PRESENTATION	NAME OF CONFERENCE/EVENT	DATE	TYPE
Jessani, N.	Hovering at 25%: the infodemic surrounding South Africa's challenges with the Covid-19 Vaccination.	World Evidence-Based Health Care Day. Joanna Briggs Institute Australia.	10/2021	Fireside chat webinar and panel.
Jessani, N.	Science Communication in a Pandemic	World Evidence-Based Health Care Day. Joanna Briggs Institute Australia.	10/2021	Panel
Jessani, N.	Engaging with decision-makers to support evidence-informed policy and practice	Cochrane Convenes	10/2021	Round table discussions.
Van Wyk, S.S.	Repairing boundaries along pathways to TB case detection: A qualitative evidence synthesis of programme designs	The Union 52nd World conference on Lung Health	10/2021	Poster
Jessani, N.	Integrated knowledge translation in non-communicable disease research in Sub-Saharan Africa: a Comparison of Systematic and Ad hoc Stakeholder Engagement.	14th Annual Conference on the Science of Dissemination and Implementation in Health.	12/2021	Poster (presented by co-author)

POSTGRADUATE STUDENT SUPERVISION

STUDENT	TYPE	INSTI-TUTION	TOPIC	SUPERVISOR	STATUS
Munyaradzi Madhombiro	MClinEpi	SU	Validation of the Alcohol Use Disorders Identification Test in People Living With HIV/AIDS in Zimbabwe	Tonya Esterhuizen	Graduated
Caro-Lee Saal	MClinEpi	SU	Risk factors for Neurodevelopmental Delay in Paediatric Tuberculous Meningitis	Tonya Esterhuizen	Graduated
Tracy Richardson	MClinEpi	SU	Preventing vertical transmission of HIV in the Rural Western Cape: Assessing shortfalls in interventions for mothers and their infants according to HIV acquisition risk	Tonya Esterhuizen	Graduated
Makabongwe Nombula	Masters in Biostatistics	SU	Impact of Missing Data on the Modelling HIV/AIDS Progression in Subjects Receiving Antiretroviral Therapy (ART)	Samuel Manda Tonya Esterhuizen	Graduated
Preesha Premasagar	PhD	UKZN	A comparative assessment of the investigative results and major adverse cardiovascular events in South African patients presenting with non-specific chest pain: A retrospective long term analysis	Coleen Aldous Tonya Esterhuizen	Ongoing
Jacques van Niekerk	MClinEpi	SU	Quality of Systematic Reviews in African Emergency Medicine: A Methodological Study	Michael McCaul Anke Rohwer	Ongoing
Lisa Fincham	MClinEpi	SU	Research waste in COVID-19: A meta-epidemiological study	Michael McCaul	Ongoing

POSTGRADUATE STUDENT SUPERVISION *Continued*

STUDENT	TYPE	INSTI-TUTION	TOPIC	SUPERVISOR	STATUS
Eric Tornu	PhD	SU		Portia Jordan Michael McCaul	Ongoing
Marli McAlister	MClinEpi	SU	Advancing guideline quality through country-wide and regional appraisal of CPGs: a scoping review	Michael McCaul Ivan Florez	Graduated (Cum Laude)
Kopano Dude	MClinEpi	SU	Adverse birth outcome case definitions associated with maternal HIV and Antiretroviral Therapy use in pregnancy: a scoping review	Michael McCaul Amy Slowgrove	Ongoing
Dirk Kotze	MPhil EMC	DUT	Survival and Functional Outcome After Prehospital Endotracheal Intubation in Non-Traumatic Brain Pathologies: A Retrospective Cohort Study	Michael McCaul Chris Stein	Ongoing
Irvin Kendall	PhD	KU Leaven	Evidence ecosystem for first aid training in low- and middle-income countries	Emmy Buck Bert Avau Bert Aertgeerts Michael McCaul	Ongoing
Mary Hoffe	MMed	UCT	Emergency clinician output in a district hospital emergency centre: a cross-sectional analysis	Clint Hendricks Michael McCaul	Ongoing
Liezel Blaauw	M Nutrition	SU	The impact of guideline recommended protein intake on mortality and length of ICU stay in critically ill adults: a systematic review	Janicke Visser Anel Schoonees	Ongoing
Anel Schoonees	PhD Public Health	SU	Perusing the Use of Research Evidence in mass Media reporting on health by journalists and science communicators in South Africa: the PURE Media project	Taryn Young George Claassen Celeste Naude	Ongoing
Nondumiso Xhaza	MClinEpi	SU	Prevalence of positive birth HIV PCR in neonates born from HIV positive mothers and associated risk factors at Nkonjeni Hospital, Ulundi in KwaZulu natal from July 2018 to June 2019	Moleen Dzikiti	Graduated
Mulumba Ntafua	MClinEpi	SU	Contraceptive use and the risk for sexually transmitted infections among South African young adult females	Moleen Dzikiti	Graduated
Matjeko Lenka	MClinEpi	SU	Survival of tuberculosis patients and antiretroviral therapy in Maluti Adventist Hospital, Lesotho: A retrospective cohort study	Moleen Dzikiti	Ongoing
Lindie Rossouw	MClinEpi	SU	Evaluating the birth outcomes of pregnant women living with HIV attending an antenatal clinic in Cape Town, South Africa, compared to those who are not living with HIV	Moleen Dzikiti	Ongoing
Victoria Ndarukwa	PhD Epidemiology	SU	Assessment of postnatal HIV transmission over the first 9 months of life in infants born to mothers on cART: does feeding method matter?	Moleen Dzikiti	Ongoing

POSTGRADUATE STUDENT SUPERVISION *Continued*

STUDENT	TYPE	INSTI-TUTION	TOPIC	SUPERVISOR	STATUS
Oloruntoba Babawarun	PhD Epidemiology	SU	A Cluster randomized controlled trial assessing the effect of Mobile-phone based delivery of sexual and reproductive health on Willingness and Uptake of Long Acting Reversible Contraceptives Among Female Sex Workers in Oyo State, Nigeria	Moleen Dzikiti	Ongoing
Lindi Mathebula	PhD Public Health	SU	Assessing routine childhood vaccination acceptance, hesitancy and refusal in Cape Town metro district, Western Cape, South Africa	Moleen Dzikiti	Ongoing
Luphiwo Mdzuzana	PhD in Health Sciences Rehabilitation	SU	Towards equitable prosthetic prescription in South Africa	Moleen Dzikiti	Ongoing
Tiwonge Mitande	PhD in Bioethics	SU	Ethics of pragmatic cluster trials in LDCs	Carl Lombard	Ongoing
Sode Idelphonse	PhD in Epidemiology	SU	Estimation and Operational Characteristics of the Restricted Mean Survival Time using a Bayesian Decision-Theoretic Framework	Carl Lombard	Ongoing

SUPPORTING GRADUATES TO PUBLISH THEIR RESEARCH PROJECTS

STUDENT	TYPE	TOPIC	CITATION	SUPERVISOR
Kessendri Reddy	MClinEpi	Neonatal hospital-acquired bloodstream infections	Reddy K, Bekker A, Whitelaw AC, Esterhuizen TM, Dramowski A (2021) A retrospective analysis of pathogen profile, antimicrobial resistance and mortality in neonatal hospital-acquired bloodstream infections from 2009–2018 at Tygerberg Hospital, South Africa. <i>PLoS ONE</i> 16(1):e0245089.	Tonya Esterhuizen Angela Dramowski
Oostewalt Swart	MClinEpi	Surgical site infection	Swart O, Esterhuizen TM, Voss M. The role of treatment delays in surgical site infection after appendicectomy in a South African rural regional hospital. <i>S Afr Med J.</i> 2021 Mar 2;111(3):271-275.	Tonya Esterhuizen Miranda Voss
Blanchard Iyemosolo	MClinEpi	Circumcision and STD	Iyemosolo BM, Chivese T, Esterhuizen TM. A comparison of the prevalence of sexually transmitted infections among circumcised and uncircumcised adult males in Rustenburg, South Africa: a cross-sectional study. <i>BMC Public Health.</i> 2021 Apr 6;21(1):656.	Tonya Esterhuizen Tawanda Chivese
Michael Mboko	MClinEpi	Chronic Kidney Disease and HIV	Mboko M, Esterhuizen TM, Davids MR. Prevalence of chronic kidney disease among HIV infected adults on antiretroviral therapy in Northern Namibia: a cross-sectional study. <i>African Journal of Nephrology.</i> 2021; 24 (1): 39-45	Tonya Esterhuizen Razeen Davids

SUPPORTING GRADUATES TO PUBLISH THEIR RESEARCH PROJECTS *Continued*

STUDENT	TYPE	TOPIC	CITATION	SUPERVISOR
Elizabeth Oduwole	PhD	Vaccine hesitancy	Oduwole, E.O.; Esterhuizen, T.M.; Mahomed, H.; Wiysonge, C.S. Estimating Vaccine Confidence Levels among Healthcare Staff and Students of a Tertiary Institution in South Africa. <i>Vaccines</i> 2021, 9, 1246.	Charles Wiysonge Hassan Mahommed Co-author: Tonya Esterhuizen
Kim Morgan	MMed	Maternal hypoglycemia and anaesthesia	Morgan KL, Levin AI, Esterhuizen TM. The incidence of maternal hypoglycemia with prolonged fasting before elective caesarian section. <i>Southern African Journal of Anaesthesia and Analgesia.</i> 2021; 27(4): 175-179	AI Levin Co-author: Tonya Esterhuizen
Seshni Naidoo	MMed	Malignant Melanoma	Naidoo S, Burger H, Esterhuizen TM. Delays in the referral and primary management of cutaneous malignant melanoma at Tygerberg Hospital. <i>S. Afr. j. oncol.</i> 2021;5(0), a183.	H Burger Co-author: Tonya Esterhuizen
Lynn Hendricks	MClinEpi	Adherence to ART	Hendricks, L., Eshun-Wilson, I. & Rohwer, A. A mega-aggregation framework synthesis of the barriers and facilitators to linkage, adherence to ART and retention in care among people living with HIV. <i>Syst Rev</i> 10, 54 (2021).	Anke Rohwer
Johanalize Louw	PhD (SU)	Appendectomy	Submitting for publication	KM Chu Co-author: Michael McCaul
Mary Hoffee	MMed (UCT) EM	Emergency Medicine	In-press	Clint Hendricks Co-author: Michael McCaul
Eyitayo Omolara Owolabi	PhD (SU)	Global Surgery	Ongoing	K Chu Co-author: Michael McCaul
Christoff Geldenhuys	MBchB	Clozapine-Associated Leukopenia and Agranulocytosis in Western Cape, South Africa A 3-Year Retrospective Cohort Study	Christoff Geldenhuys, Moleen Zunza, Nicki Tiffin, Liezl Koen, Eric H. Decloedt. Clozapine-Associated Leukopenia and Agranulocytosis in Western Cape, South Africa A 3-Year Retrospective Cohort Study. <i>Journal of Clinical Psychopharmacology</i> 2021; 41(3):250-254.	Co-author: Moleen Dzikiti
Ottovon Bismark Dakurah	MPhil Cancer	Viral hepatitis associated hepatocellular carcinoma on the African continent, the past, present, and future: a systematic review	Ottovon Bismark Dakurah, Cynthia Raissa Tchuem Tamandjou, Moleen Zunza, Wolfgang Preiser and Tongai Gibson Maponga. Viral hepatitis associated hepatocellular carcinoma on the African continent, the past, present, and future: a systematic review. <i>BMC Cancer.</i> 2021; 21:715.	Co-author: Moleen Dzikiti

Intellectual Input

Taryn Young

- Member, Curriculum committee, International Society on Evidence-Based Health Care, 2013 – ongoing
- Advisory Group Member, DFID BCURE project at University Johannesburg, 2014 – ongoing
- Member, Faculty Committee Postgraduate Teaching, 2016 – ongoing
- Member, Academy of Science of South Africa, 2017 – ongoing
- Member, Senate, Stellenbosch University, 2017 – ongoing
- Member, Cochrane Africa Steering Group, 2017 – ongoing
- Chair, Joint Postgraduate committee, Global Health, SU, 2019 – ongoing
- Member, National Health Research Committee South Africa, 2020 – 2023
- Member, WHO Guideline Review Committee, 2020 – 2023

Peter Nyasulu

- Editorial Board Member, BMC Infectious Diseases
- Member of Board, Faculty of Medicine & Health Sciences, Stellenbosch University
- Member, America College of Epidemiology
- Member, Royal Society of South Africa
- Member, International Epidemiology Association
- Executive Member, Africa Epidemiology Association
- External Expert Member, Health Research Ethics Committee of the Human Sciences Research Council, South Africa
- Member, Ethics Committee of Faculty of Medicine & Health Sciences, SUN
- Member, Joint Postgraduate Committee, Department of Global Health
- Editorial Board Member, Malawi Medical Journal
- Executive Member, Africa Centre for EHealth Excellence
- Expert Panel Member, National Research Foundation, South Africa
- Member, Expert Review Committee of the Primary Healthcare and Adult Hospital Level of the National Department of Health, South Africa
- Member, Peer Review Panel of Academy of Science of South Africa (ASSAt) for Evaluating journals of other disciplines

Tonya Esterhuizen

- Member, Health Research Ethics Committee, 2018 – ongoing
- Member, Masters in Biostatistics programme committee, 2019 – ongoing
- Co-chair, Masters in Clinical Epidemiology programme, selection and bursary committees, 2020 – ongoing

Celeste Naude

- Member, Technical Reference Group on Healthy Eating, Western Cape Government Health, 2014 – ongoing
- Member, Chronic Disease Initiative for Africa, 2014 – ongoing
- Associate Editor, Cochrane Effective Practice and Organisation of Care, 2015 – ongoing
- Member, Ministerial Committee on Mortality and Morbidity in Children (CoMMiC), National Department of Health; Directorate: Child & Youth Health, 2015 – 2021
- Co-director, Cochrane Nutrition, 2016 – ongoing
- Member, Cochrane Fields Executive Committee, 2016 – ongoing
- Member, Cochrane African Network, 2016 – ongoing
- Associate Editor, Nutrition Journal, Biomed Centra, 2017 – ongoing
- Member, Cochrane WHO Working Group, 2018 – ongoing
- Member, South Africa GRADE Network, 2018 – ongoing
- Member, Nutrition Guidance Expert Advisory Group (NUGAG) Subgroup on Policy Actions; Safe, Healthy and Sustainable Diets Unit, Department of Nutrition and Food Safety, World Health Organization Guideline Development Groups, 2018 – ongoing
- Collaborator, NutriRECS (Nutritional Recommendations and accessible Evidence summaries Composed of Systematic reviews), 2018 – ongoing

- Advisory group member, Enabling sustainable public engagement in improving health and health equity (IHC CHOICE) project, Norwegian Institute of Public Health, 2020 – ongoing
- Methodologist, Guideline on the prevention and treatment of wasting in infants and children, Food and Nutrition Action in Health Systems Unit, Department of Nutrition and Food Safety, World Health Organization, 2020 – ongoing
- Advisory group member, Cochrane Editorial Integrity and Efficiency Project, 2021 – ongoing

Carl Lombard

- Member, SAMRC Ethics Committee, 2018 – ongoing
- Reviewer, BMBF funding initiative for clinical trials, German Federal Ministry of Education and Research, 2019 – ongoing
- Chairperson, DSMB PriME trial comparing VPM1002 to BCG vaccine in newborn infants, 2020 – ongoing
- Statistical reviewer, HIV Lancet, 2020 – ongoing
- Reviewer, BMJ Open, 2021
- Reviewer, BMC Paediatrics 2021
- Honorary Professor, Department of Medicine, University of Cape Town, 2021
- Reviewer, NRF raring 2021
- External Examiner, WITS MSc in Epidemiology module, 2021

Nasreen Jessani

- Advisory Board member, AcademyHealth, USA: Knowledge Translation and Dissemination Advisory Committee, 2013 – ongoing
- Vice Chair, Evidence to Action Thematic Working Group, Health Systems Global, 2016 – 2021
- Knowledge Translation and Management Expert WHO/TDR, 2019 – ongoing
- Advisory Group member, INASP UK, 2020 – ongoing
- Steering Committee member, JBI Australia: World Evidence Based Health Care Day, 2020 – ongoing
- Associate Editor, Health Research Policy and Systems journal, 2020 – ongoing
- Manuscript reviewer and editor, WHO/AHPSR, 2021 – ongoing
- Curriculum Design: Module 10 - Knowledge Translation: From Research to Practice and Policy, AfriWon Research collaborative (part of WONCA – World organisation of family doctors), 2021
- Peer reviewer, PLOS Global Public Health Journal, ongoing
- Peer reviewer, Evidence and Policy Journal, ongoing
- Peer reviewer, Health Policy and Planning Journal, ongoing
- Peer reviewer, International Journal of Health Planning and Management, ongoing
- Peer reviewer, Health Research Policy and Systems Journal, ongoing
- Peer reviewer, American Journal of Public Health, ongoing
- Peer reviewer, BMJ Global Health, ongoing

Moleen Dzikiti

- Reviewer, Journal of international AIDS society journal, 2016 – ongoing
- Reviewer, Contemporary Clinical Trials communication Journal, 2017 – ongoing
- Member, Stellenbosch University Human Research Ethics committee, 2017 – ongoing
- Reviewer, AIDS & Behavior Journal, 2019 – ongoing
- Associate Editor, Pilot and Feasibility Studies Journal. October 2020 – ongoing
- Honorary Lecturer, University of Witwatersrand, Department of Epidemiology & Biostatistics., September 2020 – ongoing
- External Examiner, University of Pretoria (1x MSc Epidemiology thesis and 2x MSc Public Health theses), 2021
- External Examiner, University of the Witwatersrand (2x MSc Epidemiology thesis), 2021
- Internal Examiner, Stellenbosch University (1x MSc Clinical Epidemiology thesis), 2021
- Early Career Epidemiologist Representative for Africa Region, International Epidemiology Association, September 2021 – 2024

Anke Rohwer

- Methods Editor, Cochrane Public Health, 2014 – 2021
- Editor, Cochrane Infectious Diseases, 2020 – date
- Lead of Teaching Methods Consultants Group, Evidence-based Research Network (EVBRES), 2018 – ongoing
- Peer reviewer, African Journal of Primary Health Care & Family Medicine, 2021



Jeannine Uwimana-Nicol

- Reviewer, National Institute for Health Research (NHS): NIHR Global Health Policy and Systems Research Awards, 2019
- Reviewer, BMJ Open, 2018 – ongoing
- Reviewer, The Pan African Medical Journal, 2018 – ongoing
- Reviewer, BMC Health Services Research, 2012 – ongoing
- Reviewer, Journal of international AIDS society, 2011 – ongoing
- Member of the HIV/TB Working Group, The Union against TB and lung diseases, 2012 – ongoing
- Member of the STOP TB Partnership Network on Tuberculosis, 2011 – ongoing
- Member of the Health Systems Research Global (HSG), 2012 – ongoing
- Emerging voice for Global Health, Mentor, 2013 – ongoing
- Member of the Social Impact committee, Faculty of Medicine and Health Sciences. Stellenbosch University
- Member of the Public Health Association of South Africa (PHASA), 2009 – ongoing

Anel Schoonees

- Steering Group Committee Member, Cochrane Africa, 2017 – ongoing
- Peer reviewer, African Journal of Nephrology, October 2021

Amanda Brand

- Member, Cochrane Nutrition coordinating team, 2019 – ongoing
- Member, SA GRADE Network, 2020 – ongoing

Susan van Wyk

- Peer reviewer, Clinical and Experimental Medicine, 2021
- Peer reviewer, African Journal of Emergency Medicine, 2021
- External examiner, University of the Witwatersrand (1x MSc Epidemiology theses), 2021

Michael McCaul

- Examiner UCT MPH, 2017 – ongoing
- Examiner UCT MPhil Emergency Medicine, 2017 – ongoing
- Section Editor, African Journal of Emergency Medicine, 2019 – ongoing
- Member, SA GRADE Network, 2020 – ongoing
- Member, GRADE, 2020 – ongoing
- Peer Reviewer, PLOS, 2020 – ongoing
- Peer Reviewer, BMC HSR, 2020 – ongoing
- Examiner, CPUT BSc EMC, 2021 – ongoing
- Working group member, COVID-END, 2020 – ongoing
- Co-op Committee member, SA EDL, 2020 – ongoing
- Methodologist, Guideline on the prevention and treatment of wasting in infants and children, Food and Nutrition Action in Health Systems Unit, Department of Nutrition and Food Safety, World Health Organization, 2020 – ongoing
- Peer Reviewer, Journal of Clinical Epidemiology, 2021 – ongoing

Lynn Hendricks

- Member, American Psychological Association, 2012 – ongoing
- Executive Member, Psychological Society of South Africa, 2019 – ongoing
- Chairperson, Psychological Society of South Africa - Special Interest Group: Psychology, Environment and Climate Change, 2020 – ongoing
- Guest Editor, Psychology in Society, Special Issue: Psychology, Environment, and Climate Change: Foregrounding Justice, 2021 – 2022
- Guest Editor, South African Journal of Psychology, Special Issue Psychology and the Climate Emergency, 2021 – 2022

Teaching Sessions

SESSIONS FACILITATED FOR UNDERGRADUATE PROGRAMMES

PROGRAM	NO. OF SESSIONS (HOURS)	NO. OF STUDENTS
Dietetics (3rd year)	56	36
Health in Context (first year MBchB, Nursing, Physiotherapy, Dietetics)	29	420
Introduction to Clinical Medicine (2nd year MBchB)	5	300
Clinical Pharmacology (4th year MBchB)	8	300

SESSIONS FACILITATED FOR POSTGRADUATE PROGRAMMES

We convene various modules of the MSc in Clinical Epidemiology (SU) and facilitate the teaching and learning of many sessions. In 2021 we continued teaching and learning online.

1. Fundamentals of Epidemiology
2. Systematic Reviews and Meta-Analysis
3. Writing and Reviewing Scientific papers
4. Diagnosis and Screening
5. Biostatistics I
6. Biostatistics II
7. Research Proposal Writing and Grantmanship
8. Teaching EBHC
9. Clinical Practice Guidelines
10. Randomised Controlled Trials
11. Infectious Disease Epidemiology

FUNDING

The research, other outputs and activities of the CEBHC are made possible through funding received from various organisations.



The CEBHC does not receive any funding from commercial sources, defined as any for-profit manufacturer or provider of health care, or any other for-profit source with a real or potential vested interest in the findings of specific research. We align with the FMHS and University intent to not accept any form of support, financial or otherwise, from the tobacco industry or its proxies, nor engage with any institution, organisation or foundation, where its income is directly derived from the production of harmful tobacco products (whether for smoking or other activities), or the promotion of said harmful products.

Contact Us

Centre for Evidence-based Health Care (CEBHC)
Division of Epidemiology and Biostatistics
Department of Global Health
Faculty of Medicine and Health Sciences
Stellenbosch University
PO Box 241, Cape Town, 8000
South Africa

Tel: +27 21 938-9886
Email: tyoung@sun.ac.za or tracin@sun.ac.za
Website: www.cebhc.co.za
Facebook: www.facebook.com/cebhc
Twitter: @cebhc

